

TEAC[®]
EGOTERIC

SERVICE MANUAL

P-2s

CD DRIVE UNIT

COMPACT
disc
DIGITAL AUDIO

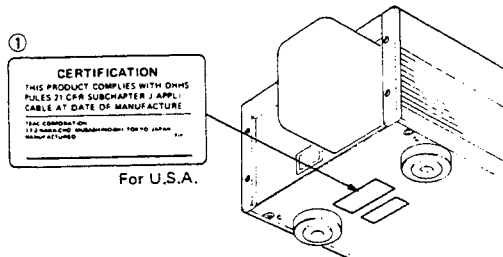
1 SAFETY INFORMATION

This product has been designed and manufactured according to FDA regulations "title 21, CFR, chapter 1, subchapter J, based on the Radiation Control for Health and Safety Act of 1968", and is classified as class 1 laser product. There is not hazardous invisible laser radiation during operation because invisible laser radiation emitted inside of this product is completely confined in the protective housings.

The label required in this regulation is shown ①.

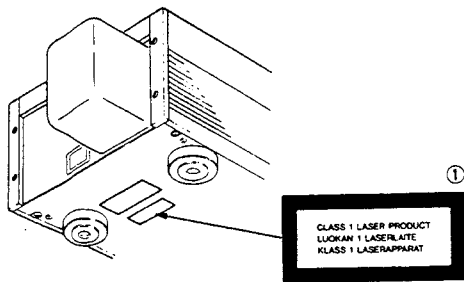
• CAUTION

- DO NOT REMOVE THE PROTECTIVE HOUSINGS USING SCREWDRIVER.
- USE OF CONTROLS OR ADJUSTMENTS OR PERFORMANCE OF PROCEDURES OTHER THAN THOSE SPECIFIED HEREIN MAY RESULT IN HAZARDOUS RADIATION EXPOSURE.
- IF THIS PRODUCT DEVELOPS TROUBLE, MAKE A CONTACT WITH OUR SERVICEMAN, AND DO NOT USE THE PRODUCT IN A TROUBLED STATE.



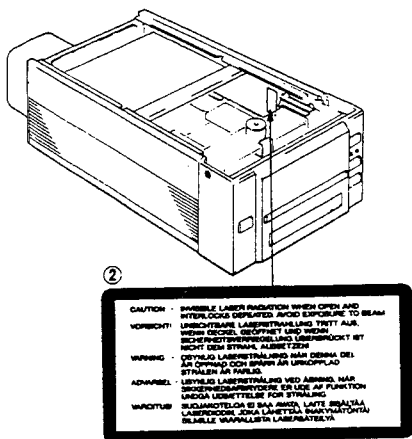
Optical pickup: Type : KSS-151A
 Manufacturer : SONY Corporation
 Laser output : 0.2 mW or less on the objective lens
 Wavelength : 780 nm ± 20 nm

• CAUTION • ACHTUNG • OBSERVERA • ADVARSEL



- ① THIS LABEL IS ATTACHED TO THE PLACE AS ILLUSTRATED TO INFORM THAT THE APPARATUS CONTAINS A LASER COMPONENT
 - ② THIS LABEL IS ATTACHED TO THE INSIDE OF THE TOP COVER AS ILLUSTRATED. SO THAT ANY FURTHER PROCEDURE WILL BRINGING THE USER INTO EXPOSURE WITH THE LASER BEAM
- CAUTION—USE OF CONTROLS OR ADJUSTMENTS OR PERFORMANCE OF PROCEDURES OTHER THAN THOSE SPECIFIED HEREIN MAY RESULT IN HAZARDOUS RADIATION EXPOSURE

- ① DIESE AUFKLEBEMARKE IST AN DEM IN DER ABBILDUNG GEZEIGTEN ORT ANGEBRACHT UM DARAUF HINZUWEISEN, DASS SICH IM INNERN DES GERÄTS EINE LASER-KOMPONENTE BEFINDET
 - ② DIESE AUFKLEBEMARKE IST WIE ABGEBILDET AN DER INNENSEITE DER OBEREN ABDECKUNG ANGEBRACHT UM DAVOR ZU WARNEN, DASS DER BENUTZER BEI WEITERGEHENDEN EINGRIFFEN LASERSTRAHLEN AUSGESETZT IST
- ACHTUNG—VERWENDUNG VON REGLERN, EINSTELLUNGEN ODER EINGRIFFE VON ANDERER NATUR ALS HIERIN ANGEZEIGT KANN DIE AUSSETZUNG GEFAHRLICHER STRAHLENDOSEN NACH SICH ZIEHEN



- ① PÅSKRIFTEN SITTER PÅ APPARATEM SOM VISAS SOM EN UPPMANING OM ATT APPARATEN OMFATTAR EN INBYGGD LASERKOMPONENT
 - ② PÅSKRIFTEN HAR PLACERATS PÅ INSIDAN AV HÖLJET OCH VARNAR MOT YTTRELLIGARE INGREPP I APPARATEN, EFTERSOM DETTA KAN MEDFÖRA UTSÄTTANDE FÖR LASERSTRÅLAR
- VARNING—ANVÄNDNING AV KONTROLLER, JUSTERINGAR ELLER ANDRA ÅTGÄRDER UTOVER DET SOM TAS UPP HAR KAN INNEBÄRA RISK FÖR RADIOAKTIV STRÅLNING

- ① DETTE MÆRKAT ER ANBRAGT SOM VIST I ILLUSTRATIONEN FOR AT ADVARE BRUGEREN OM AT APPARATET INDEHOLDER EN LASERKOMPONENT
 - ② DETTE MÆRKAT ER SOM VIST PÅ ILLUSTRATIONEN ANBRAGT PÅ INDERSIDEN AF TOPDÆKSELET FOR AT ADVARE BRUGEREN OM AT YDERLIGERE FREMTRÆNGEN VIL VÆRE FORBUNDET MED FARE FOR AT UDSÆTTE SIG FOR LASERSTRÅLING
- ADVARSEL—BETJENING AF ANDRE KONTROLLER OG REGULATORER ELLER BENYTTELSE AF ANDRE FREMGANGSMÅDER END BESKREVET HERI ER FORBUNDET MED FARE FOR UDSÆTTELSE FOR LASERSTRÅLING
- "VAROITUS! SUOJAKOTILOA EI SAA AVATA. LAITE SISÄLTÄÄ LASERDIODIN, JOKA LÄHETTÄÄ (NÄKYMATONTA) SILMILLE VAARALLISTA LASERSATEILYÄ."

2 SPECIFICATIONS

仕様

〈PICK UP〉

Type	Optical 3-beam laser pickup
Objective System	2-dimensional parallel drive
Laser Type	GaAlAs type semiconductor laser
Wavelength	780 nm

〈SIGNAL FORMAT〉

Sampling Frequency	44.1 kHz
Quantization Bit	16-bit linear/channel
Channel Bit Rate	4.3218 Mb/sec
Channel Modulation	EFM
Error Correction	CIRC

〈DISC〉

Type	Compact Disc
Playing Time	Approx. 60/20 min.
Diameter	120/80 mm
Thickness	1.2 mm
Scanning Velocity	1.2-1.4 m/sec
Track Pitch	1.6 μm

〈AUDIO〉

Output-Digital	Digital Audio Interface Format
	Coaxial (BNC • RCA) :
	0.5 Vp-p/75 ohms
	Optical (TOS) :
	-15 dBm to -21 dBm
	Optical (ST) :
	-12.5 dBm to -15 dBm
	XLR (BALANCED) :
	4 Vp-p/110 ohms

〈GENERAL〉

Power Requirements	100/120/220/240 V AC, 50-60 Hz [GE] 120 V AC, 60 Hz [US/C] 220 V AC, 50 Hz [E]
Power Consumption	18 W
Dimensions (W × H × D)	225 × 134 × 490 mm (8-7/8" × 5-1/4" × 19-5/16")
Weight (net)	14 kg (30.86 lbs.)

〈REMOTE CONTROL UNIT〉

Remote Control System	Infrared pulse coding system
Batteries	DC 3 V (SUM-3, "AA", "R6" type × 2)

〈STANDARD ACCESSORIES PROVIDED〉

- Wireless Remote Control Unit (RC-356 or RC-357)
- Batteries (SUM-3, "AA", "R6" type × 2)
- Coaxial Cord (digital)
- AC Power Cord
- Instruction Manual (loose-leaf type with hard cover)

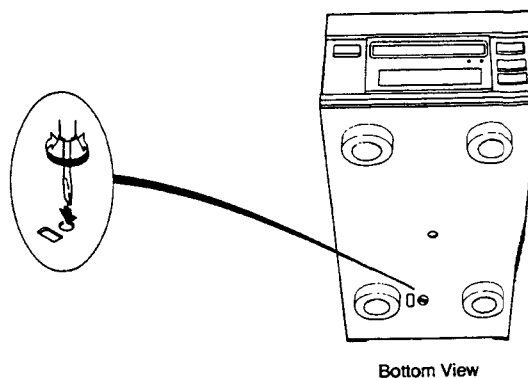
*Specifications were determined using a sampling frequency of 44.1 kHz except as noted.
*Improvements may result in specification or feature changes without notice.
*Photos and illustrations may differ slightly from production models.

VOLTAGE CONVERSION

(For general export models)

If it is necessary to change the voltage requirements of the player to match your area, use the following procedure :

1. DISCONNECT POWER LINE CORD.
2. Using a screwdriver, turn the selector until the desired voltage marking appears.



Bottom View

P-2s

〈ピックアップ〉

方式	対物レンズ駆動、光化学式3ビーム
対物レンズ駆動方式	2次元平行駆動
光源	半導体レーザー
波長	780nm
ピックアップ駆動方式	リニアモーター駆動

〈信号フォーマット〉

標本化周波数	44.1kHz
量子化ビット数	16ビットリニア/チャンネル
伝送レート	4.3218Mb/sec
変調方式	EFM
エラー訂正方式	CIRC

〈ディスク〉

方式	コンパクトディスク
演奏時間	約60分/約20分
ディスク直径	120mm/80mm
ディスク厚	1.2mm
線速度	1.2~1.4m/sec
トラックピッチ	1.6 μ m

〈オーディオ〉

出力(デジタル)	0.5V _{p-p} /75 Ω (BNC, RCA) -15dBm~-21dBm (OPTICAL TOS) -12.5dBm~-15dBm (OPTICAL ST) 4V _{p-p} /110 Ω (XLR BALANCED)
----------	--

〈一般〉

電源	100V AC 50-60Hz
消費電力	18W
外形寸法(W×H×D)	225×134×490mm
重量	14kg

〈リモコン RC-356〉

リモコン方式	赤外線パルス方式
電池	DC 3V 乾電池SUM-3型 2個使用

〈付属品〉

- リモコン(RC-356)
- 乾電池(単3 SUM-3)×2
- 同軸コード(バン・デン・ハル社 デジタル・コード VDH-T208)
- 取扱説明書(バインダー含む)
- 保証書

*仕様および外観は、改善のため予告なく変更することがあります。

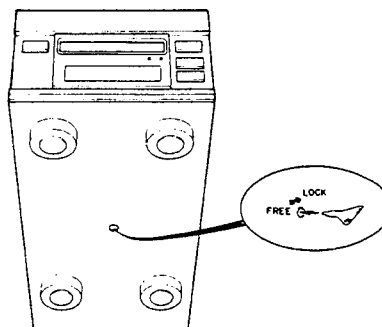
*製品の改善により、取扱説明書の写真などが一部製品と異なることがあります。あらかじめご了承ください。

ANTI-SHOCK BRACKET

To protect the laser pickup mechanism from shocks and movement during transit, it is secured by a special anti-shock bracket. Before starting operation, be sure to release this bracket, which is accessed from the bottom.

防振装置について

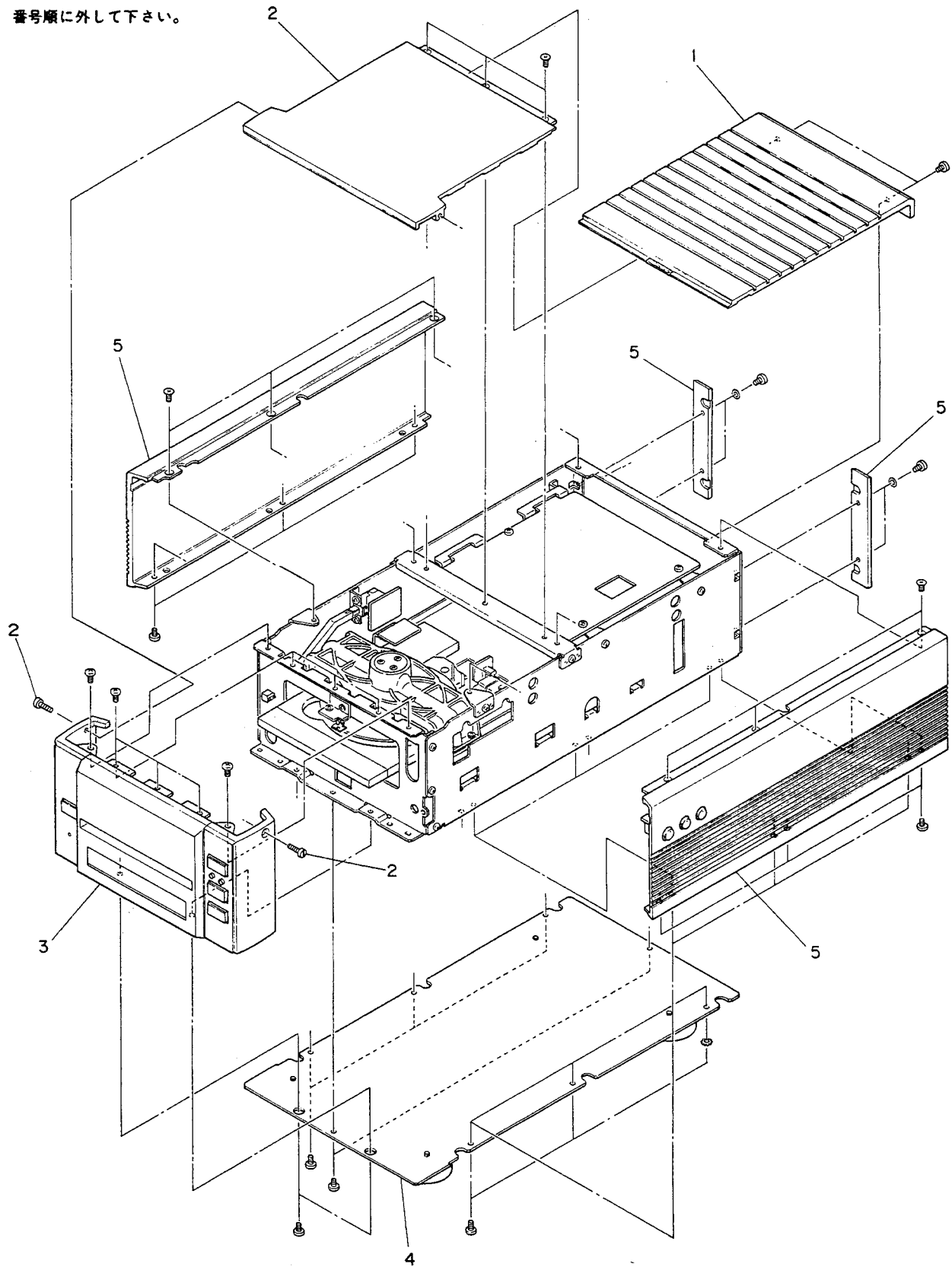
本機は輸送時の振動からピックアップを守るため、防振装置で固定してあります。本機を動作させる場合は、必ず防振装置を解除してください。



3 REMOVAL OF EXTERNAL COMPONENTS

外装部品の外し方

Disassemble in number-order
番号順に外して下さい。



4 ADJUSTMENT AND CHECKS

調整と確認

Notes:

1. How to handle the pick-up support assembly
 - (1) Do not apply shocks to the assembly.
 - (2) Do not touch the object lens.
 - (3) Do not place the assembly in a place subject to excessive dust, heat or moisture.
 - (4) Do not disassemble.
 - (5) During the transportation, mounting and dismounting of the assembly, support it with your fingers at points A and B as shown in Fig. 4-1. Be particularly careful not to touch the actuator, the photosensor and the LD plate, and do not apply force to them.
2. Cleaning the object lens
 - (1) If the object lens becomes dirty, playback will deteriorate.
 - (2) To clean the lens, moisten the KODAC cleaning tissue in isopropyl alcohol and wipe the lens gently.
3. To prevent the laser diodes from deteriorating and protect them from destruction.
 - (1) Do not touch the laser diode terminal, the LD plate and circuit components.
 - (2) While adjusting the laser pick-up, be sure to ground connected instruments and your body to prevent static electricity destroying the laser diodes (See Fig. 4-2).
 - (3) Laser beams are similar to infrared rays. Do not look at the beams directly, and keep your eyes at least 30cm away from them.

【注意事項】

1. ピックアップ サポート Ass'yの取扱い
 - (1) 落下, 衝撃を加えない.
 - (2) 対物レンズには手を触れない.
 - (3) ゴミ・埃の発生する場所, 高温・多湿の場所を避ける.
 - (4) 分解はしない.
 - (5) 持ち運び, 取り付け, 取り外しの際は, Fig.4-1のAとB部で支えてください.
特にアクチュエータ, 光検地器部, LDプレート部は手を触れたり力を加えないこと.
2. 対物レンズの清掃
 - (1) 対物レンズに汚れが付くと, 再生能力が劣化します
 - (2) 清掃にあたっては, レンズ・クリーニング・ペーパー (KODAC社製等) にイソプロピル・アルコールを浸して使用し, 液の残りが無いように拭きとってください.
3. レーザー・ダイオードの劣化, 破壊防止
 - (1) レーザー・ダイオード端子, 及びLDプレート, 回路部品に直接手を触れぬこと.
 - (2) 光ピックアップを取り扱う際は, 測定器等に確実なアースを取ること. 又, 人体アースを行ない, 静電気破壊を防止してください. (Fig.4-2参照)
 - (3) レーザ光は近赤外で目視は困難です. 目の安全のため目を対物レンズから30cm以上離してください.

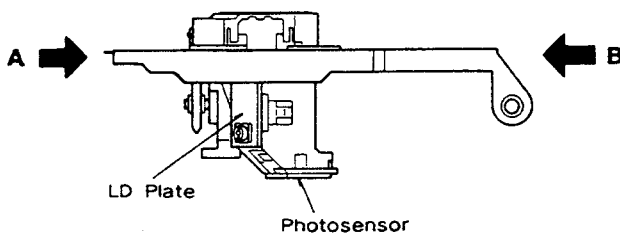


Fig.4-1

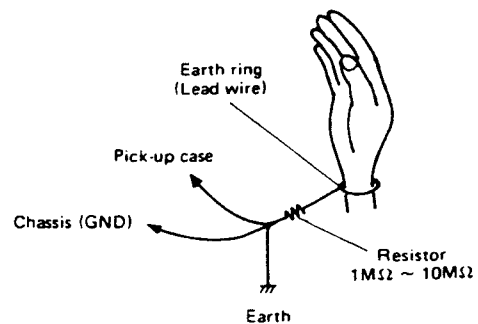


Fig.4-2

4 - 1 Servo Circuit Adjustments

4 - 1 サーボ調整

* Test disc used : YEDS-18

* 使用テスト・ディスク YEDS-18

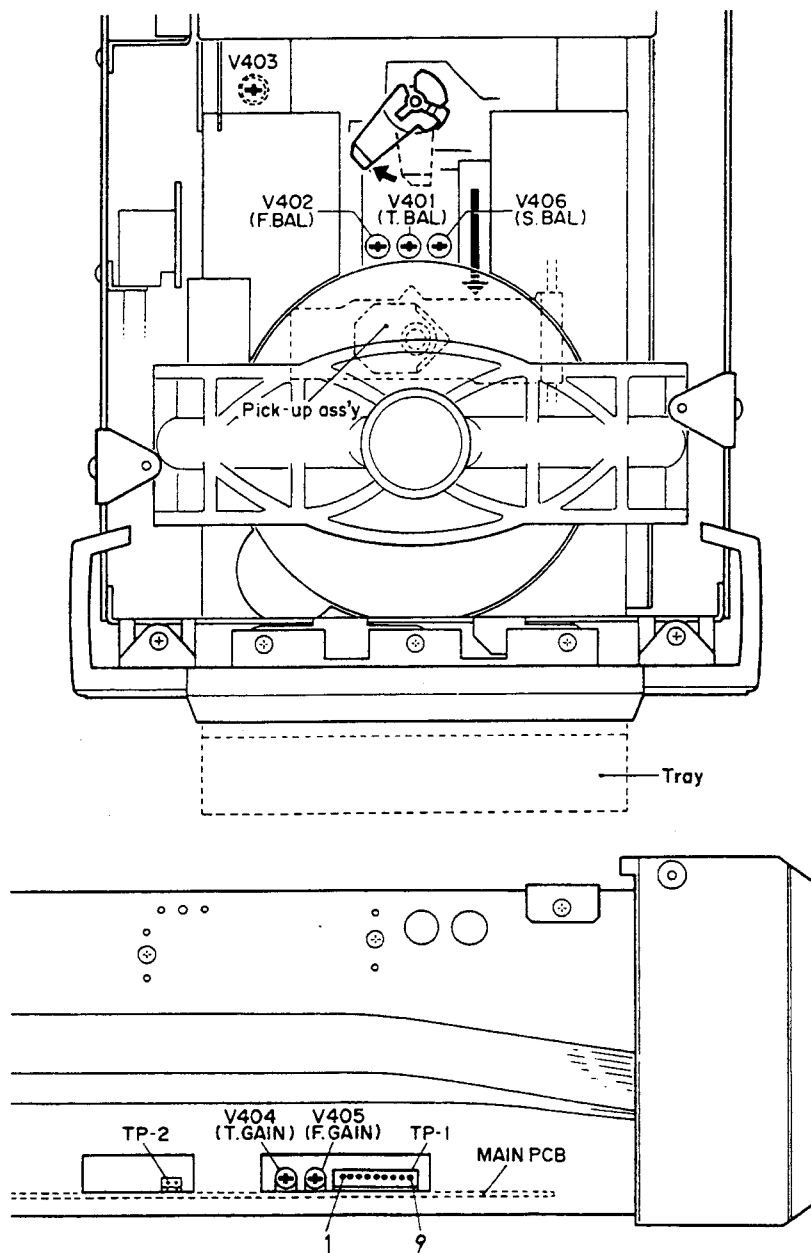
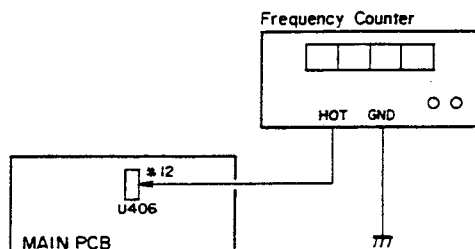


Fig.4-3 Adjustment location

4-1-1 Clock frequency adjustment

Connect the frequency counter between U406 (12) and earth (frame), then adjust C466 (MAIN PCB) so that the frequency counter reads 16.9344MHz.



4-1-2 Pickup actuator operation check

Check that the pickup assembly moves to the innermost track of the disc when the power is turned ON, and then the pickup actuator moves up and down three times.

4-1-3 PLL frequency adjustment

- 1) Set the player to the stop mode, and open the disc tray.
- 2) Ground the TP-1 pin (8).
- 3) Connect a frequency counter between TP-2 and ground, and adjust V403 for a counter reading of 4.32 ± 0.05 MHz.
(Use a probe with $\times 10$ sensitivity with the frequency counter.)

4-1-4 Sled (feed) balance adjustment

- 1) In the stop mode, move the pickup towards the front.
- 2) Adjust V406 (S.BAL) so that the voltage at TP-1 pin (9) becomes 0 V.

4-1-5 Tracking balance adjustment

- 1) Load the test disc.
- 2) Ground the TP-1 pin 5.
- 3) While pressing the PLAY button repeatedly, adjust V401 (T.BAL) so that the tracking error waveform at TP-1 pin (6) swings on the same level symmetrically centered around 0 V.

4-1-1 クロック周波数調整

MAIN PCBのU406のピン12とアース(フレーム)間に周波数カウンターを接続し、16.9344MHzになるようC466(MAIN PCB)を調整する。

4-1-2 ピックアップ・アクチュエータ動作チェック

電源ON時、ピックアップAss'yが最内周側へ移動後、ピックアップ・アクチュエータが3回上下動すること。

4-1-3 PLL周波数調整

- 1) ストップ状態にし、トレイを開ける。
- 2) TP-1の8番ピンをGNDに落す。
- 3) TP-2とGND間に、周波数カウンターを接続し 4.32 ± 0.05 MHzになるようV403を調整する。
(周波数カウンターのプローブは、オシロスコープ用のプローブを $\times 10$ にて使用。)

4-1-4 スレッド・バランス調整

- 1) ストップ状態でピックアップAss'yをフロント側に移動する。
- 2) TP-1の9番ピンが0VになるようV406(S.BAL)を調整する。

4-1-5 トラッキング・バランス調整

- 1) テスト・ディスクをセットする。
- 2) TP-1の5番ピンをGNDに落す。
- 3) プレイ鈕を繰り返し押しながらTP-1の6番ピンのトラッキング・エラーの波形が0Vを中心に同じレベルで振れるようV401(T.BAL)を調整する。

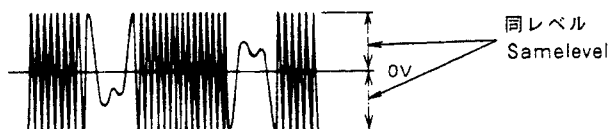


Fig.4-4

4-1-6 Focus offset adjustment

Adjst the V402 (F. BAL) so that the jitter of the waveform at the TP-1 pin (8) becomes minimum. Then, set the player into stop mode, and measure the voltage between the TP-1 (1) and GND. Check that the voltage is between 10 and 50 mV. If the voltage is outside this range, readjust it so that the jitter becomes optimum within this range. Specification: 30ns or less. (See Fig4-5,4-6)

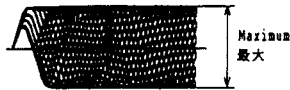


Fig. 4-5

4-1-6 フォーカス・オフセット調整

TP-1 の 8 番ピンの波形のジッター値が最小になるよう V402(F.BAL)で調整する。その後STOP状態にしてTP-1の1番ピンとGND間の電圧を測定し 10~50mVの間にあることを確認し、もし範囲内がないときは範囲内でジッターが最良になるよう再調整する。規格 30ns以下 (Fig4-5,4-6参照)

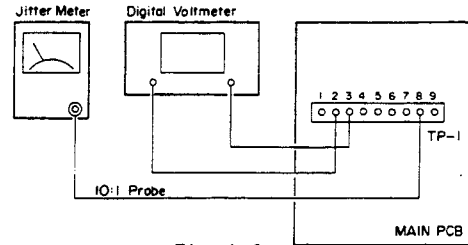


Fig. 4-6

4-1-7 Focus gain adjustment

- 1) Input a 1.2-kHz, 400m Vp-p signal from the external oscillator to TP-1 pin (4) via a 4.7-kohm resistor.
- 2) Adjust V405(F.GAIN) so that the gain difference between the signal at TP-1 pin (3) and that one for the external OSC becomes 0 dB.

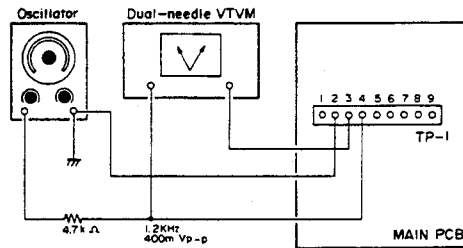


Fig. 4-7

4-1-7 フォーカス・ゲイン調整

- 1) 外部OSCより 4.7kΩの抵抗を介して、1.2kHz/400 mVp-pの信号をTP-1の4番ピンに入力する。
- 2) TP-1の3番ピンと外部OSCとのゲイン差が0dBになるようV405(F.GAIN)を調整する。

4-1-8 Tracking gain adjustment

- 1) Input a 1.2-kHz, 400m Vp-p signal from the external oscillator to TP-1 pin (6) via a 4.7-kohm resistor.
- 2) Adjust V404 (T.GAIN) so that the gain difference between the signal at TP-1 pin (5) and the one for the external OSC becomes 0 dB.

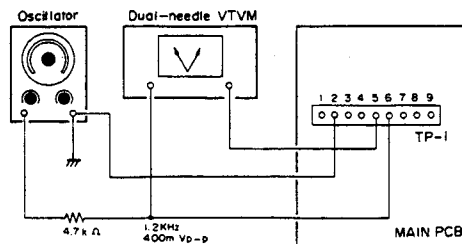
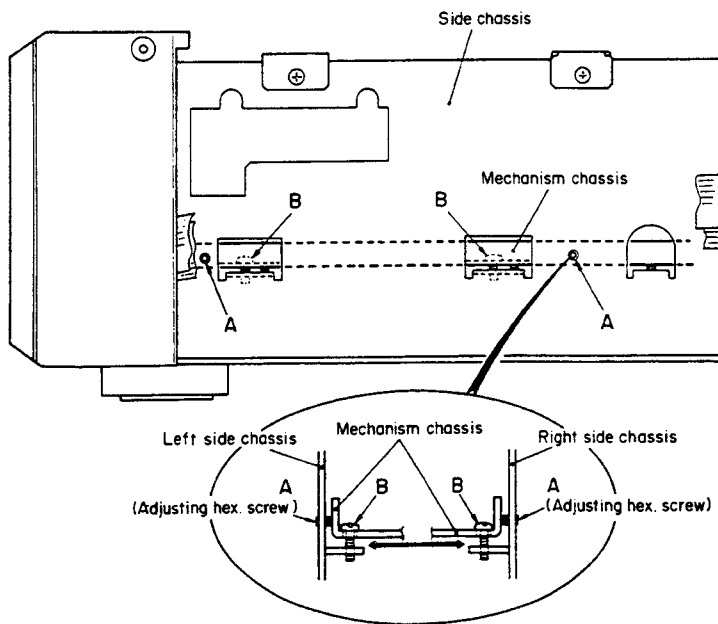
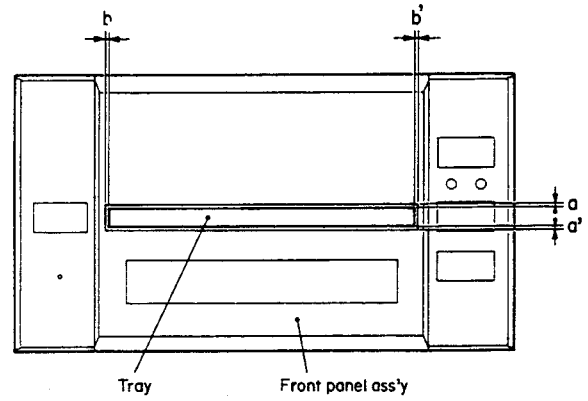
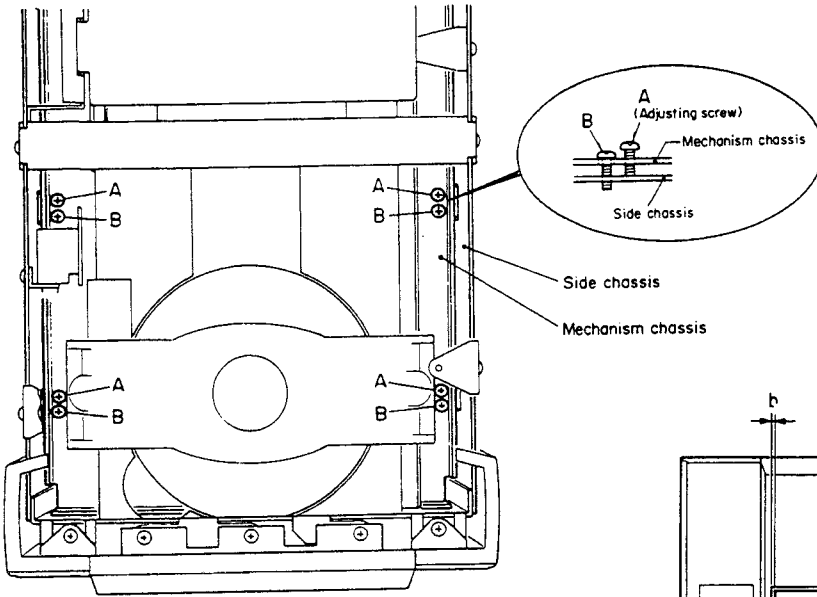


Fig. 4-8

4-1-8 トラッキング・ゲイン調整

- 1) 外部OSCより 4.7kΩの抵抗を介して、1.2kHz/400 mVp-pの信号をTP-1の6番ピンに入力する。
- 2) TP-1の5番ピンと外部OSCとのゲイン差が0dBになるようV404(T.GAIN)を調整する。



4-2-1 Mechanism assembly,
height adjustment

After loosening screw B shown in Fig. 4-9, adjust screw A shown in Fig.4-9 so that the clearances a and a'shown in Fig.4-10 become equal.
(After adjustment is complete, be sure to tighten screw B.)

4-2-2 Mechanism assembly,
horizontal position adjustment

After loosening screw B shown in Fig.4-11, adjust the four hex. screws A (two screws on the left and right side) so that the clearances b and b'shown in Fig.4-10 become equal.
(After the adjustment is complete, be sure to tighten screw B.)

4-2-1 メカAss'y高さ調整

Fig.4-9のネジBを緩めた後Fig.4-10のa,a'の隙間が等しくなるようFig.4-9のネジAで調節する。
(調節後ネジBを締めること。)

4-2-2 メカAss'y左右位置調整

Fig.4-11のネジBを緩めた後Fig.4-10のb,b'の隙間が等しくなるようFig.4-11のヘックスネジA(左右4ヶ所)で調整する。
(調整後ネジBを締めること。)

Cautions on replacing Pick Up

Part Number 53470098-00
Description Pick Up Assy KSS-151A(S)RP

A part of the FLAT CABLE pattern of this pick up is shorted by soldering as shown on the drawing below.

This is because to prevent the Laser diode from a damage caused by static electricity during the time of transportation.

Prior to mount this pick up on the chassis,the above mentioned soldering must be removed, otherwise the Laser diode will not emit Laser beam, and the player will not function. Hereunder is the procedure to remove this soldering:

- 1 . Ground the solder iron to be used.
The tip of solder iron must be 320° C less than 30W.
- 2 . Complete the connection of two connectors first, then remove the solder quickly by solder iron.

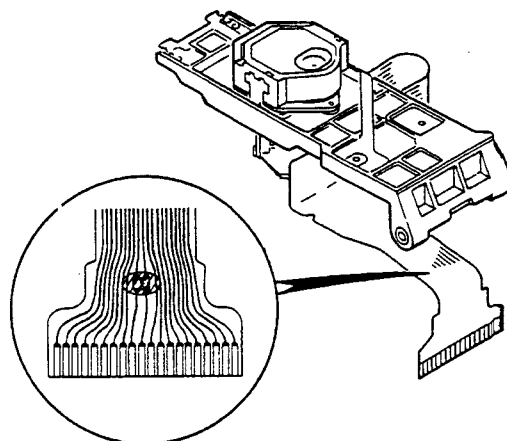
Note

This pick up is precision manufactured in the factory. No adjusting is required. Disassembling and adjustment is therefore prohibited.

ピックアップ使用上の注意

ピックアップ(53470098-00)は、レーザーダイオード保護のため半田ブリッジがされています。このままではレーザーが発光しませんので、ピックアップを交換した場合には、取付をした後で下図の斜線部分の半田ブリッジを外して使用して下さい。

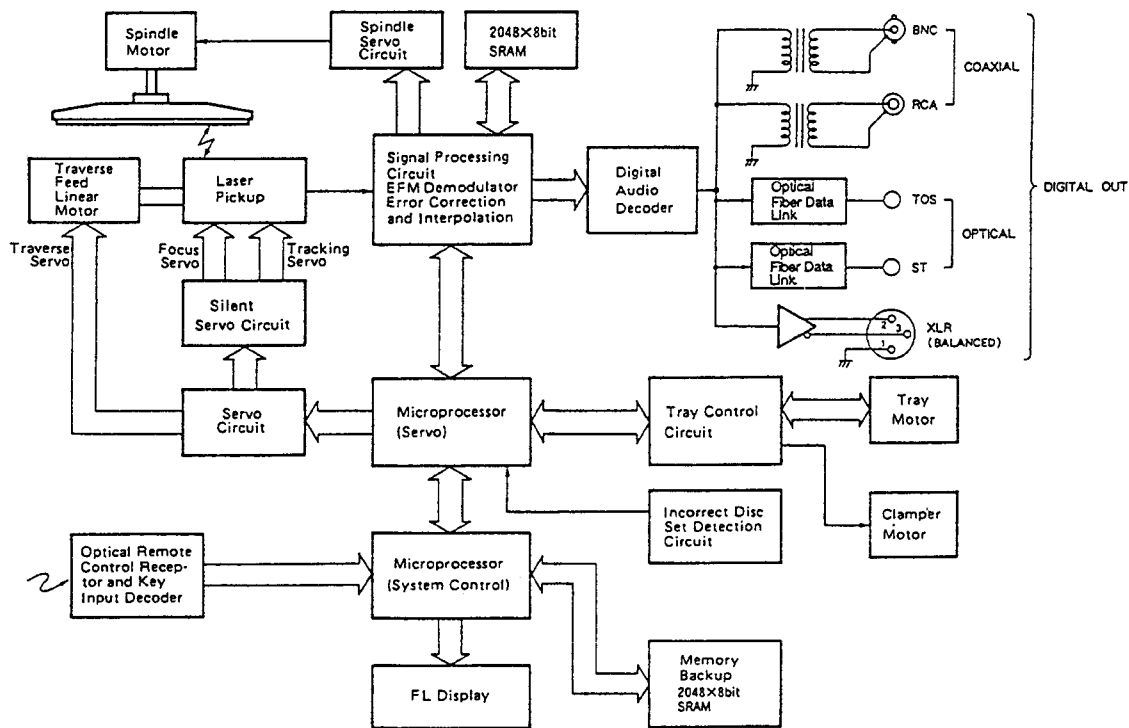
- ・フラットケーブル先端のメッキ部分には直接指など触れないで下さい。
- ・フラットケーブルは折れやすいので気を付けて作業して下さい。
- ・半田コテは30W 320° C以下を使用し、すばやく処理して下さい。
- ・ピックアップ本体の調整および分解などはしないで下さい。
- ・静電気には十分注意して下さい。



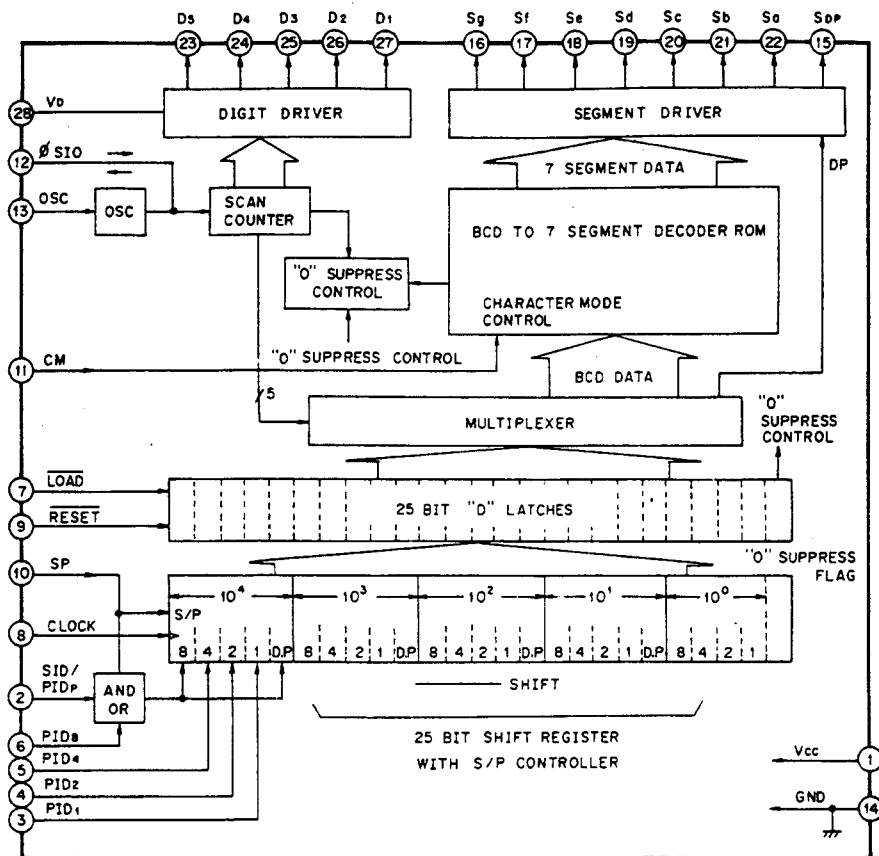
5 BLOCK DIAGRAM

ブロック・ダイアグラム

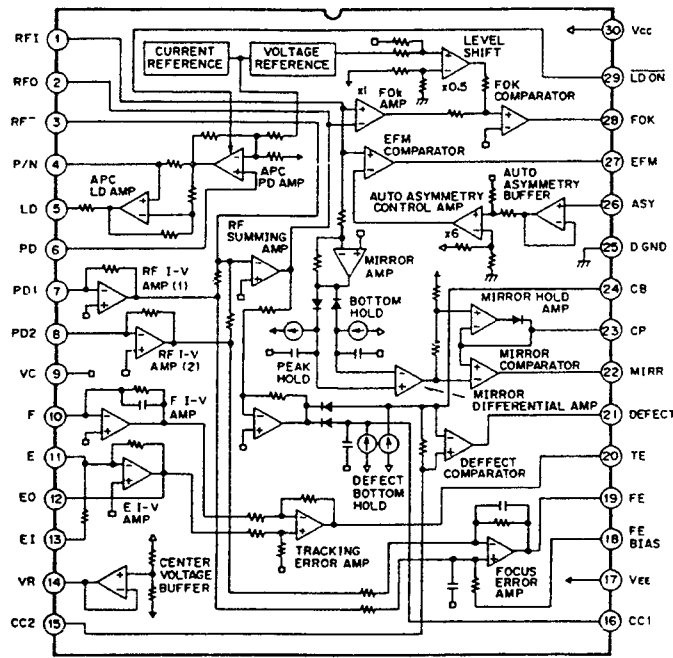
CD Drive Unit



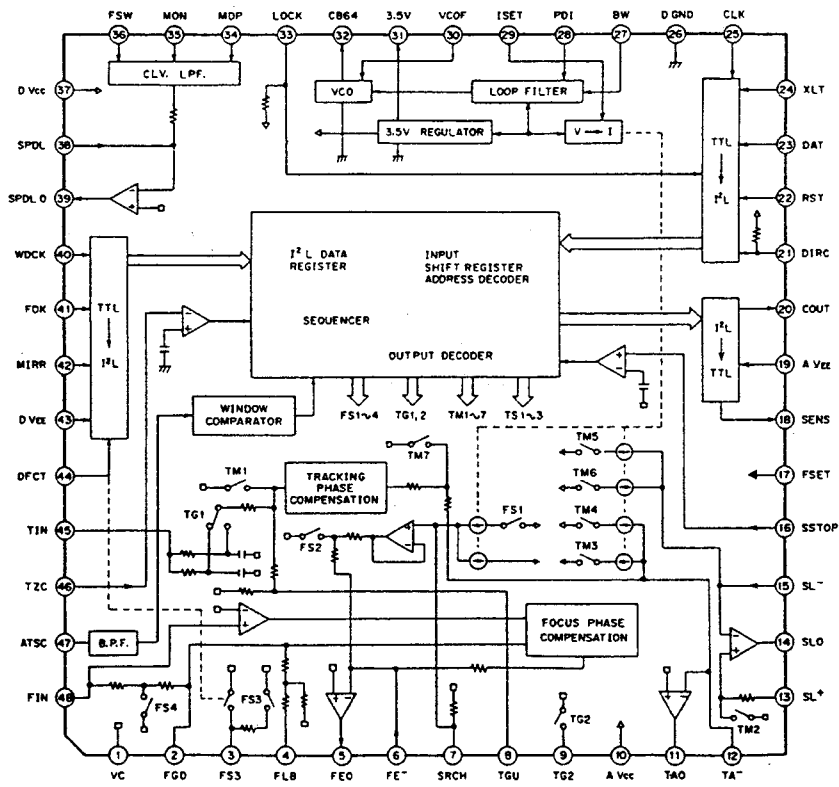
MSL9512RS



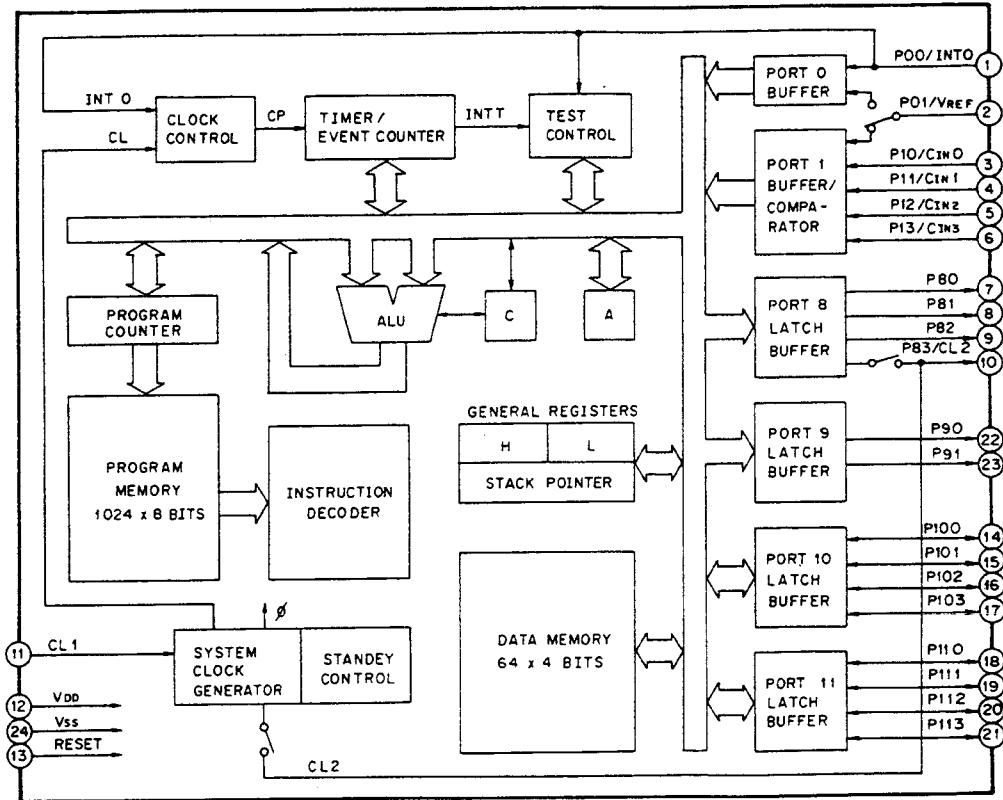
CXA 1081M



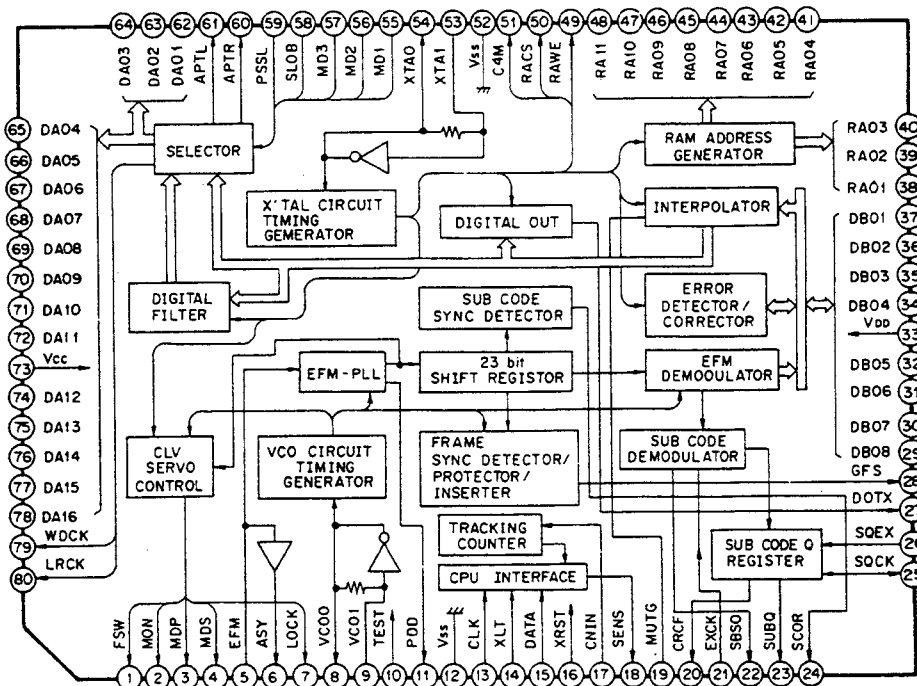
CXA 1082BQ



μPD7566CS-085



CXD1125Q



PARTS LIST SECTION

NOTES

- PC boards shown are viewed from parts side.
- Parts marked with * require longer delivery time.
- The parts with no reference number or no parts number in the exploded views are not supplied.
- As regards the resistors and capacitors, refer to the circuit diagrams contained in this manual.
- △ Parts marked with this sign are safety critical components. They must be replaced with identical components - refer to the appropriate parts list and ensure exact replacement.
- Parts of [] mark can be used only with the version designated.
[J]: JAPAN [US]: U. S. A. [C]: CANADA [GE]: GENERAL EXPORT
[E]: EUROPE [UK]: U. K. [A]: AUSTRALIA

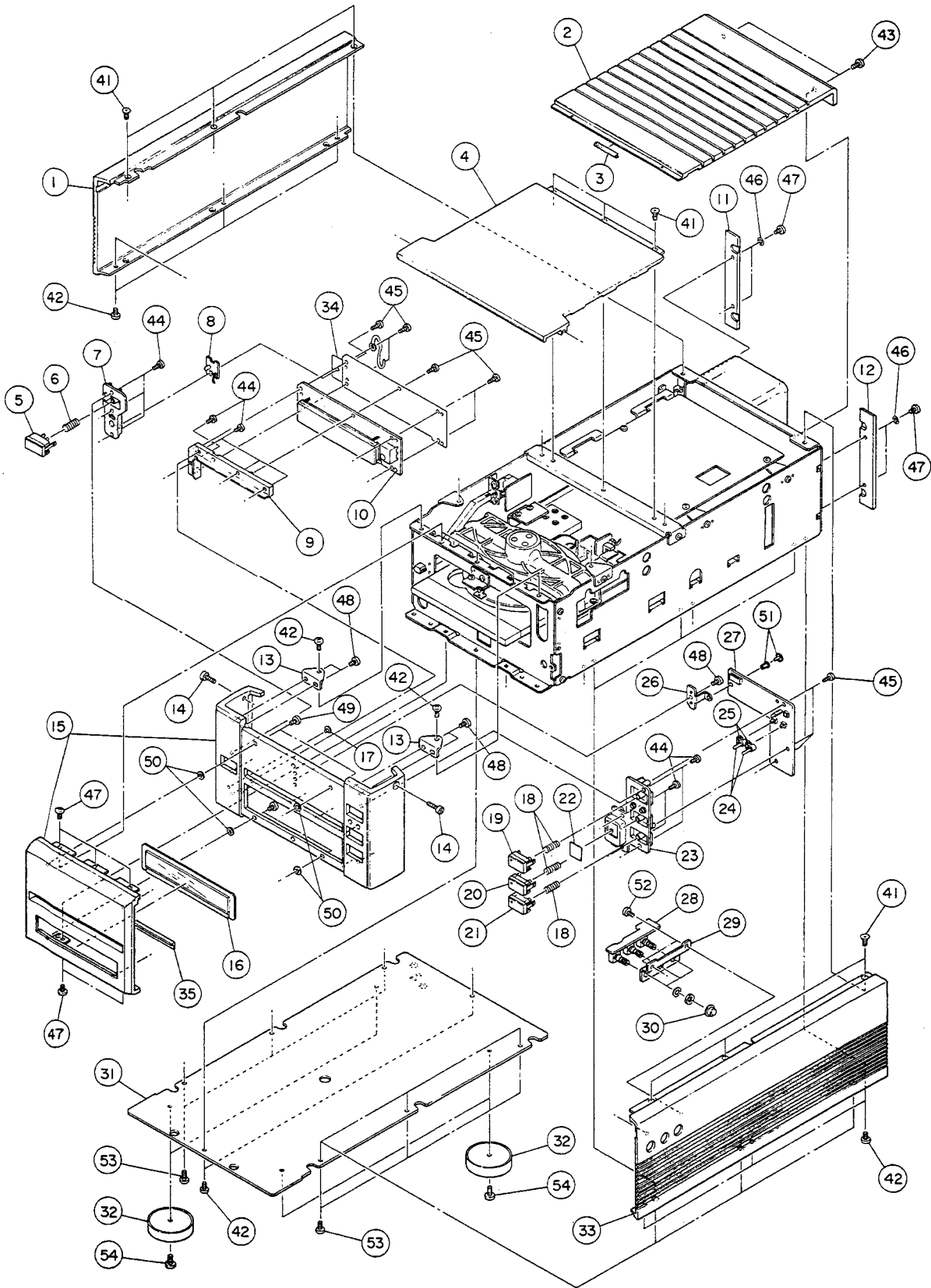
注意

- プリント基板図は部品面が示されています。
- *印の部品は納期が若干かかります。あらかじめご了承ください。
- 分解図に部番のない部品及び品番のない部品は供給しません。
- 標準の抵抗、コンデンサーは省略してあります。回路図を参照してください。
- △印は安全重要部品です。交換する時は必ずティアック指定の部品を使用してください。
- 仕向先
[J]: JAPAN [US]: U. S. A. [C]: CANADA [GE]: GENERAL EXPORT
[E]: EUROPE [UK]: U. K. [A]: AUSTRALIA

6 EXPLODED VIEWS AND PARTS LIST

分解図とパーツ・リスト

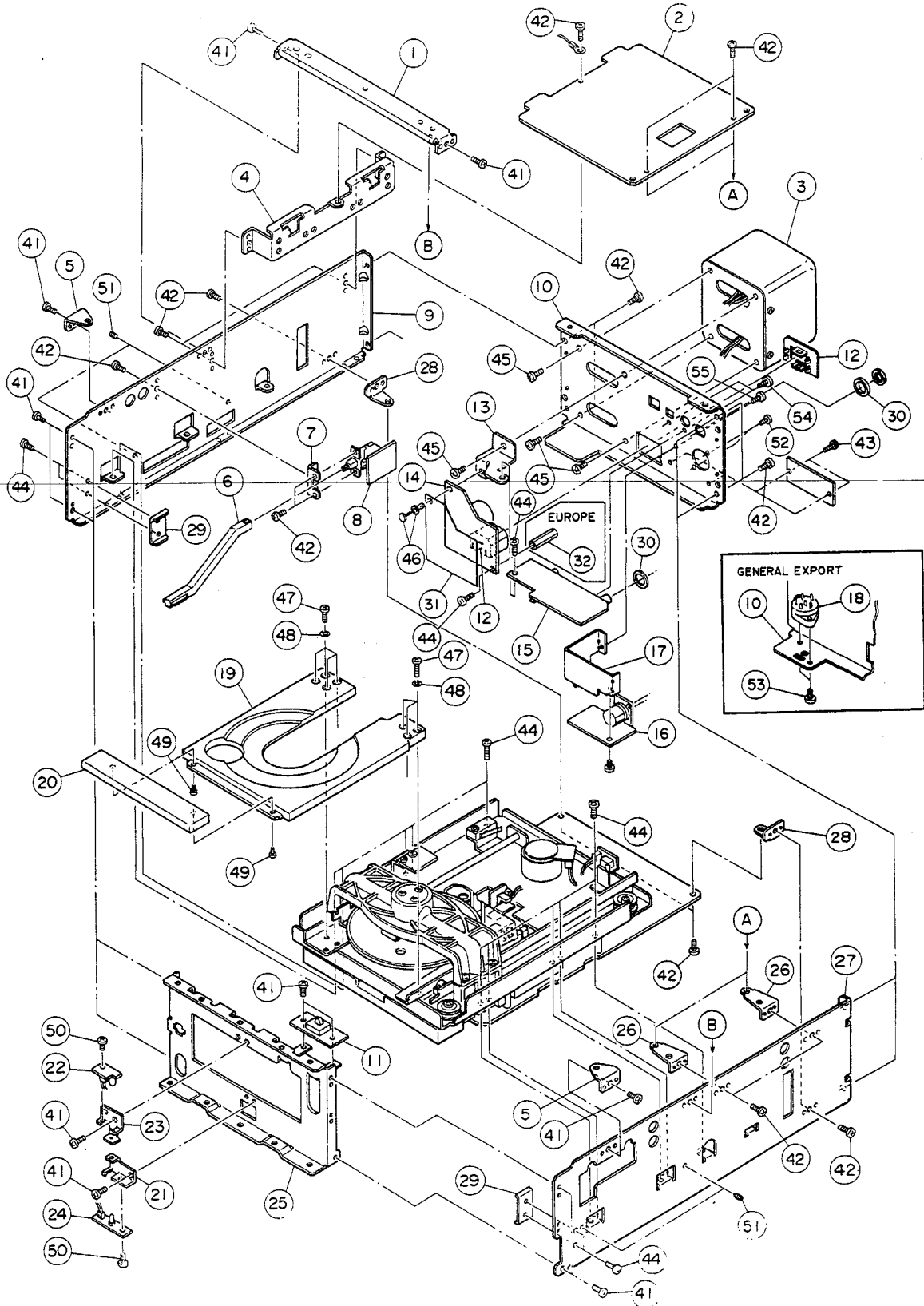
EXPLODED VIEW -1



EXPLODED VIEW-I

REF.NO.	PARTS NO.	DESCRIPTION	REMARKS
I- 1	*5801073400	SIDE PANEL(L)	
I- 2	*5801073100	TOP PANEL(B)	
I- 3	*5801117300	CUSHION	
I- 4	*5801071700	TOP PANEL(A)	
I- 5	5801068000	POWER KNOB ASSY	
I- 6	*5801070200	POWER SPRING	
I- 7	*5801072600	HOLDER(A)	
I- 8	*5200244300	LED PCB ASSY	
I- 9	*5801072500	FL HOLDER(A)	
I-10	*5200241001	DISPLAY PCB ASSY	
I-11	*5801071900	REAR HOLDER(L)	
I-12	*5801072000	REAR HOLDER(R)	
I-13	*5801069800	PANEL BRACKET	
I-14	*5801069400	TRIM SCREW	
I-15	*5801103100	FRONT PANEL ASSY,ESOTERIC	
	*5801103200	FRONT PANEL ASSY,TEAC	
I-16	*5801169000	FL WINDOW ASSY	
I-17	*5801067600	LED PIECE(C)	
I-18	*5801070100	KNOB SPRING	
I-19	5801068100	OPEN/CLOSE KNOB ASSY	
I-20	5801067900	PLAY KNOB ASSY	
I-21	5801068200	PAUSE KNOB ASSY	
I-22	*5801069200	SENSOR FILTER	
I-23	*5801072800	KEY HOLDER(A)	
I-24	5801069500	SKIP KNOB	
I-25	*5801067800	SKIP HOLDER	
I-26	*5801070800	KEY PCB BRACKET	
I-27	*5200244210	KEY PCB ASSY	
I-28	*5200339800	VR PCB ASSY	
I-29	*5801069600	VR BRACKET	
I-30	5801072200	CONTROL KNOB	
I-31	*5801314100	BOTTOM CHASSIS [ALL EXCEPT GE]	
	*5801499100	BOTTOM CHASSIS [GE]	
I-32	5801082700	FOOT ASSY	
I-33	*5801073500	SIDE PANEL(R)	
I-34	*5801115601	FL PCB COVER	
I-35	*5801069000	FL PIECE	
I-41	5780223006	SCREW,M3X6 FLAT NI BL	
I-42	5783693006	SCREW,M3X6 BIND S-TITE NI BL	
I-43	5780013008	SCREW,M3X8 BIND NI	
I-44	5780102604	SCREW,M2.6X4 PAN	
I-45	5781002608	SCREW,M2.6X8 PAN TAPPING	
I-46	5785223000	WASHER,FIBER 3X6X0.5T	
I-47	5780023006	SCREW,M3X6 BIND NI BL	
I-48	5780023005	SCREW,M3X5 BIND NI BL	
I-49	5780013006	SCREW,M3X6 BIND NI	
I-50	5785305000	WASHER,POLY. 5X8X0.25T	
I-51	5786610200	PUSH RIVETS,RP-3045-NB	
I-52	5780023004	SCREW,M3X4 BIND NI BLK	
I-53	5783613008	SCREW,M3X8 B.C-TITE NI BL	
I-54	5780024006	SCREW,M4X6 BIND NI BL	
I-55	5783613006	SCREW,M3X6 B.C-TITE NI BL	

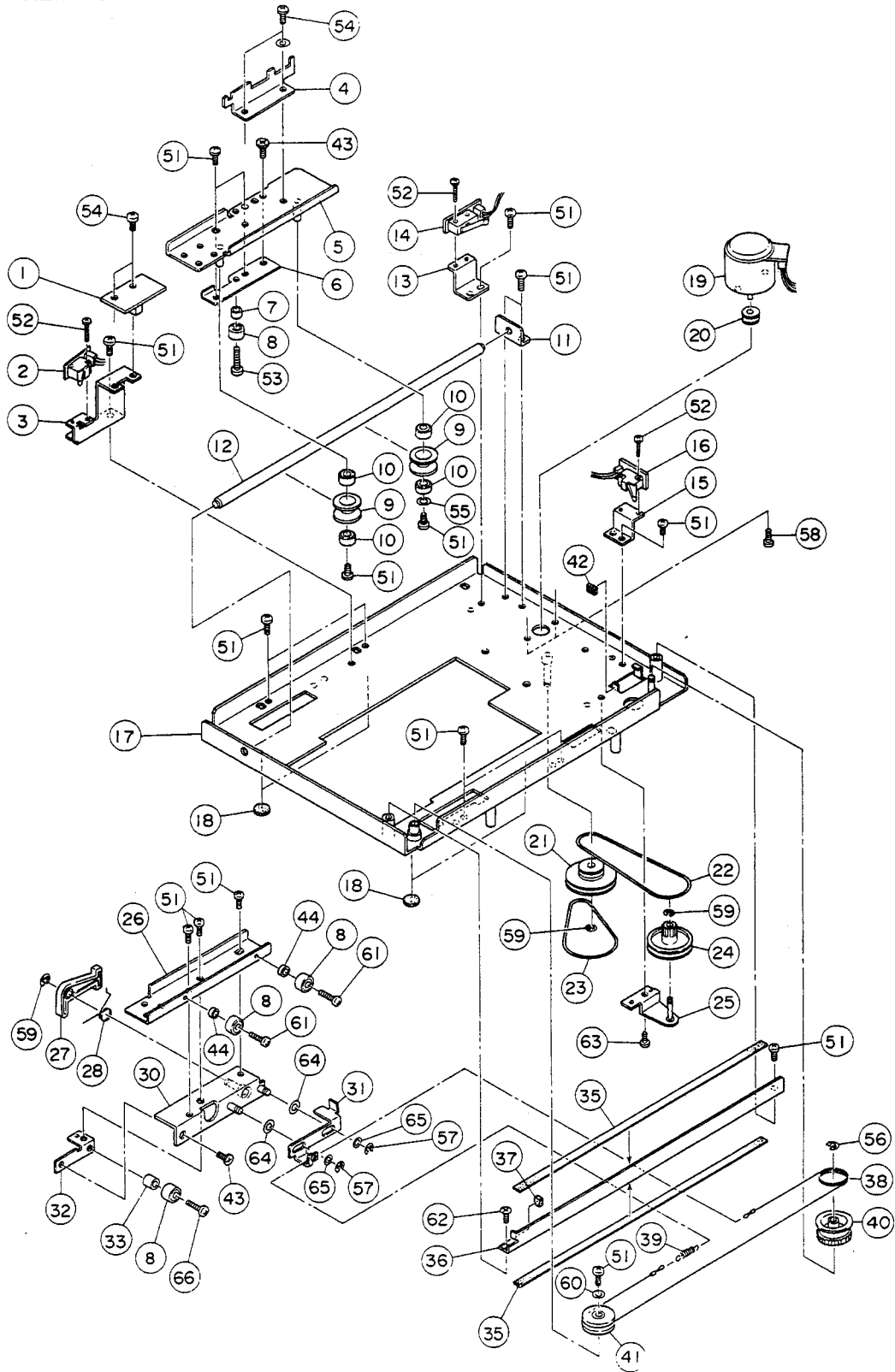
EXPLODED VIEW -2



EXPLODED VIEW-2

REF.NO.	PARTS NO.	DESCRIPTION	REMARKS
2- 1	*5801071800	BRACKET	
2- 2	*5200244040	POWER PCB ASSY [J]	
	*5200244050	POWER PCB ASSY [US,C]	
	*5200244060	POWER PCB ASSY [GE]	
	*5200244070	POWER PCB ASSY [E]	
2- 3	△ 5320049400	POWER TRANSFORMER [J]	
	△ 5320049500	POWER TRANSFORMER [US,C]	
	△ 5320062900	POWER TRANSFORMER [GE]	
	△ 5320063000	POWER TRANSFORMER [E,UK,A]	
2- 4	*5801079300	PCB BRACKET(C)	
2- 5	*5801069700	SIDE CHASSIS BRACKET	
2- 6	*5801072701	JOINT,POWER SW	
2- 7	*5801069300	POWER SW BRACKET(A)	
2- 8	*5200297600	PSW PCB ASSY [ALL EXCEPT E]	
	*5200297610	PSW PCB ASSY [E]	
2- 9	*5801082001	SIDE CHASSIS(L)	
2-10	*5801484600	REAR PANEL [J,US,C]	
	*5801484700	REAR PANEL [GE]	
	*5801484800	REAR PANEL [E]	
2-11	*5200302900	REM SW PCB ASSY	
2-12	△ 5332019600	AC SOCKET,3P WCF1061B [ALL EXCEPT E]	
	△ 5332020000	AC SOCKET,2P SOT-15Y [E]	
2-13	*5801306000	PCB BRACKET	
2-14	*5200297000	FILTER PCB ASSY [ALL EXCEPT E]	
	*5200297010	FILTER PCB ASSY [E]	
2-15	*5200337700	D-OUT PCB ASSY	
2-16	*5200339000	DB OUT PCB ASSY	
2-17	*5801499200	SHIELD BRACKET	
2-18	△ 5302101700	VOLTAGE SELECTOR SW [GE]	
2-19	*5801307400	TRAY	
2-20	*5801492400	TRAY PANEL	
2-21	*5801324100	SENSOR HOLDER(PT)	
2-22	*5200303000	SENS PCB ASSY	
2-23	*5801086501	SENSOR HOLDER	
2-24	*5200245600	PTR PCB ASSY	
2-25	*5801314000	FRONT CHASSIS	
2-26	*5801079100	PCB BRACKET(D)	
2-27	*5801082102	SIDE CHASSIS(R)	
2-28	*5801070300	MAIN PCB BRACKET	
2-29	*5801115501	CHASSIS SUPPORT	
2-30	*5730041200	INSULATOR 1U-7/16	
2-31	*5801521200	PCB COVER	
2-41	5783693006	SCREW,M3X6 BIND S-T NI BL	
2-42	5780023005	SCREW,M3X5 BIND NI BL	
2-43	5781702606	BOLT,M2.6X6 HEXAGON SOCKET NI	
2-44	5780023006	SCREW,M3X6 BIND NI BL	
2-45	5780024006	SCREW,M4X6 BIND NI BL	
2-46	5786610200	PUSH RIVETS [ALL EXCEPT E]	
	5801173000	STUD [E]	
2-47	5780023008	SCREW,M3X8 BIND NI BL	
2-48	5785003000	WASHER,PLAIN M3X0.5T	
2-49	5780012604	SCREW,M2.6X4 BIND NI	
2-50	5780103005	SCREW,M3X5 PAN	
2-51	5782013004	SCREW,M3X4 HEX CUP POINT	
2-52	5780012606	SCREW,M2.6X6 BIND NI	
2-53	5783543006	SCREW,M3X6 BIND P-T NI BL	
2-54	5783753008	SCREW,M3X8 BIND P-T CU	
2-55	5783613008	SCREW,M3X8 B.C-TITE NI BL	

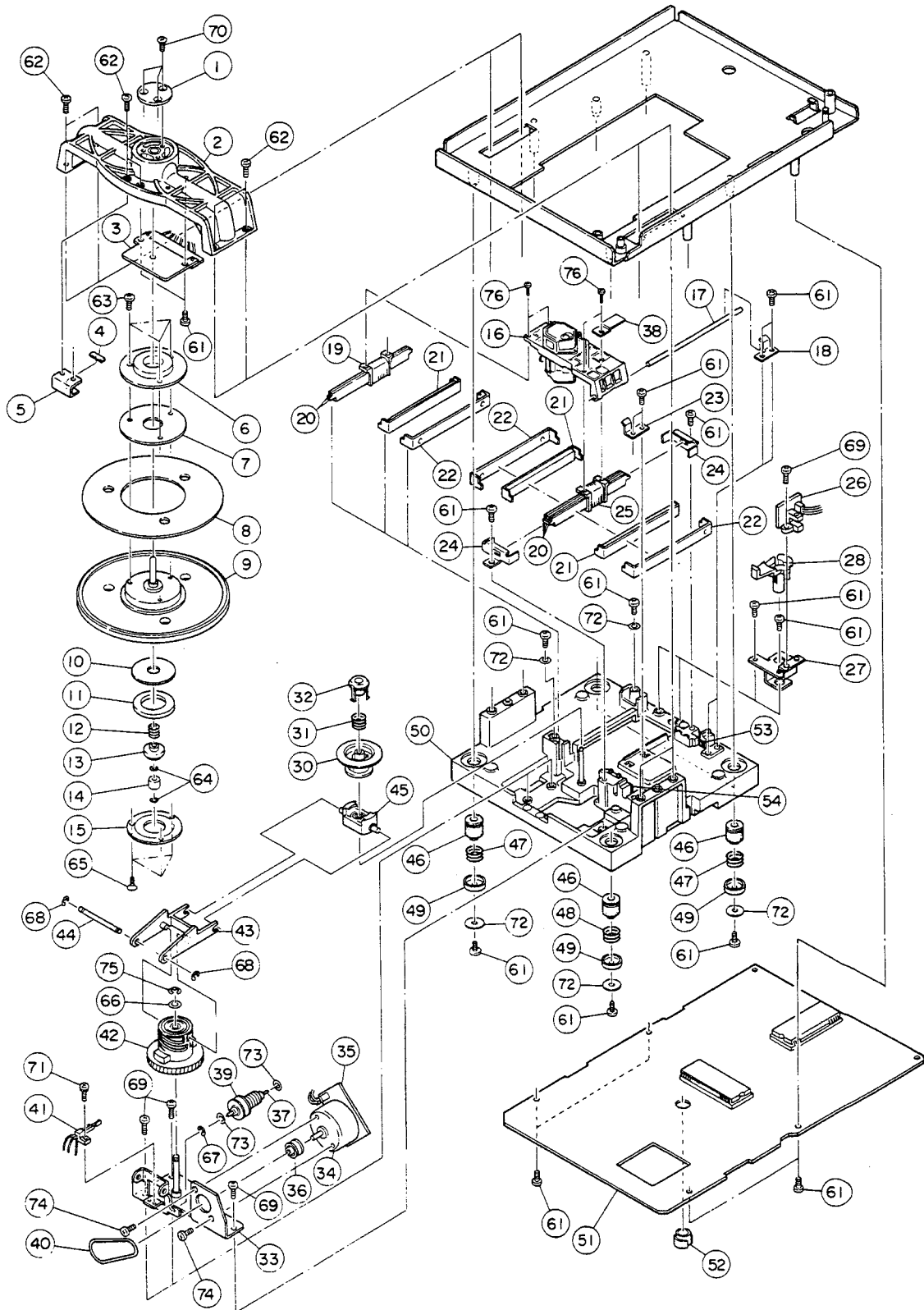
EXPLODED VIEW -3



EXPLODED VIEW-3

REF.NO.	PARTS NO.	DESCRIPTION	REMARKS
3- 1	*5200245700	INTR PCB ASSY	
3- 2	*5200297300	TO SW PCB ASSY	
3- 3	*5801304000	SWITCH BRACKET(C)	
3- 4	*5801086400	SHUTTER	
3- 5	*5801304700	ROLLER SUPPORT(L) ASSY	
3- 6	*5801303300	ROLLER ARM(L)	
3- 7	*5801305100	SPACER L=3.8	
3- 8	5730012300	BALL BEARING	
3- 9	5801303600	HR ROLLER	
3-10	5730003100	BALL BEARRING	
3-11	*5801304200	SHAFT HOLDER	
3-12	*5801304100	SHAFT GUIDE	
3-13	*5801303900	SWITCH BRACKET(B)	
3-14	*5200245400	TMC SW PCB ASSY	
3-15	*5801303800	SWITCH BRACKET(A)	
3-16	*5200297400	TC SW PCB ASSY	
3-17	*5801305000	MECHA.CHASSIS ASSY	
3-18	5801095900	RUBBER WASHER	
3-19	5370008100	MOTOR,DC	
3-20	*5801170200	MOTOR PULLEY	
3-21	*5801443100	WORM PULLEY	
3-22	5801305500	TRAY BELT(L)	
3-23	5800920201	TRAY BELT	
3-24	*5800848401	GEAR(C)	
3-25	*5801166100	PULLEY BRACKET ASSY	
3-26	*5801303200	ROLLER SUPPORT(RU)	
3-27	*5800791000	HOOK	
3-28	*5801307200	LOCK SPRING	
3-30	*5801304800	ROLLER SUPPORT(R) ASSY	
3-31	*5801303502	LOCK PLATE	
3-32	*5801303400	ROLLER ARM(R)	
3-33	*5801305200	SPACER L=5.0	
3-35	*5801309700	RAIL SHEET	
3-36	*5801084400	GUIDE PLATE(T)	
3-37	*5801384300	CUSHION,10X14XT6	
3-38	5801307000	WIRE ASSY	
3-39	*5801353200	SUPER SPRING 210I	
3-40	*5801080300	PULLEY,DRIVER	
3-41	5730029000	TOK BEARING DR-22	
3-42	*5801353000	CUSHION,4X6XT1	
3-43	*5800404400	SCREW, SHOULDER(B)	
3-44	*5801353100	SPACER L=2.0	
3-51	5780023006	SCREW,M3X6 BIND NI BLK	
3-52	5780002008	SCREW,M2X8 BIND	
3-53	5780023010	SCREW,M3X10 BIND NI BL	
3-54	5780023004	SCREW,M3X4 BIND NI BLK	
3-55	5785305000	WASHER,POLY. 5X8X0.25T	
3-56	5786002500	E RING,E2.5 (JIS)	
3-57	5786003000	E RING,E3 (JIS)	
3-58	5780022603	SCREW,M2.6X3 BIND NI BL	
3-59	5786002000	E RING,E2 (JIS)	
3-60	5785013000	WASHER,PLAIN M3X0.5T	
3-61	5780023008	SCREW,M3X8 BIND NI BL	
3-62	5780223006	SCREW,M3X6 FLAT NI BL	
3-63	5780003003	SCREW,M3X3 BIND	
3-64	5785324000	WASHER,POLY. 4X8X0.13T	
3-65	5785304100	WASHER,POLY. 4.1X6.5X0.25T	
3-66	5780023012	SCREW,M3X12 BIND NI BL	

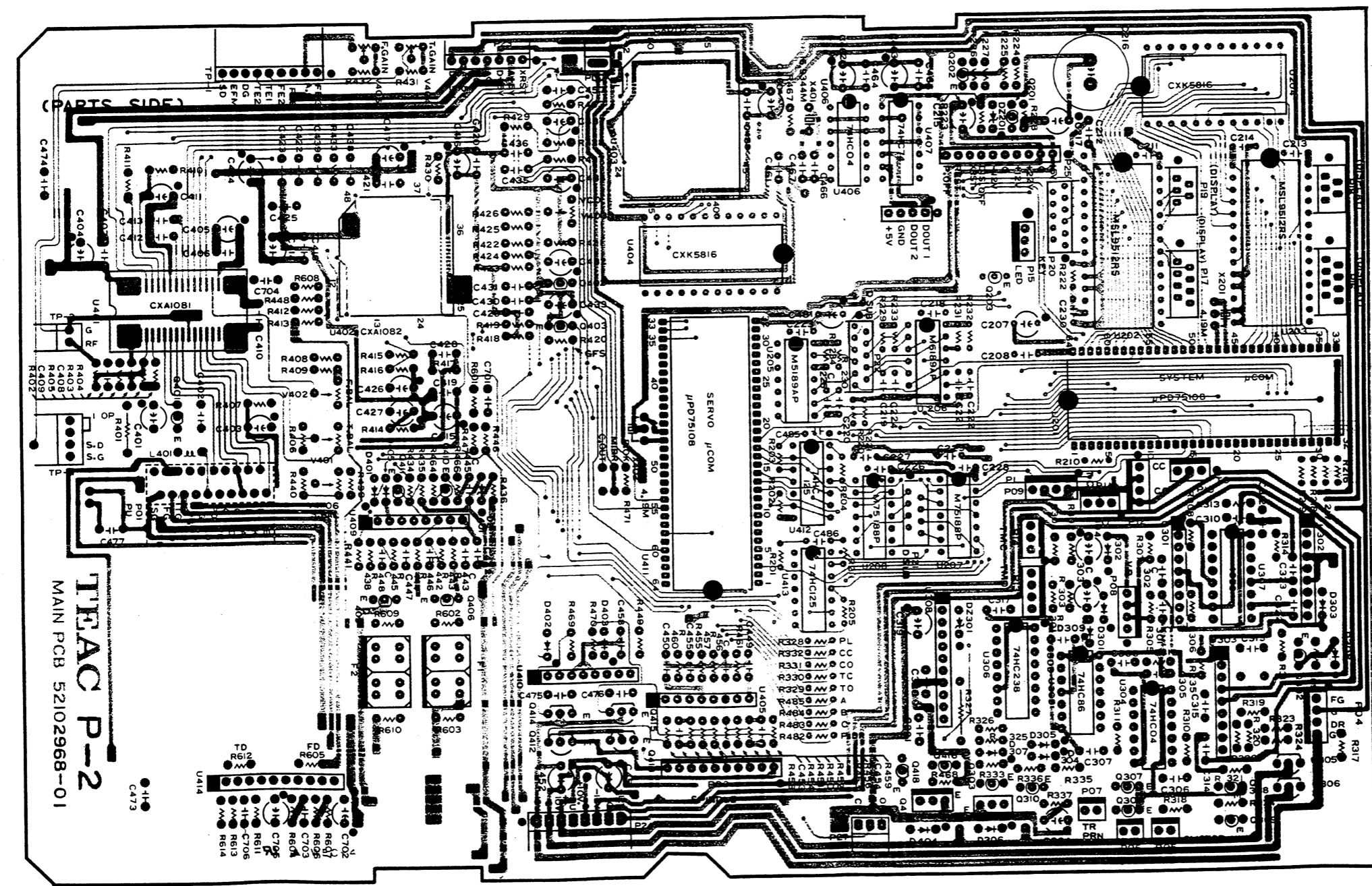
EXPLODED VIEW -4



7 PC BOARDS AND PARTS LIST

基板図とパーツ・リスト

MAIN PCB ASSY



EXPLODED VIEW-4

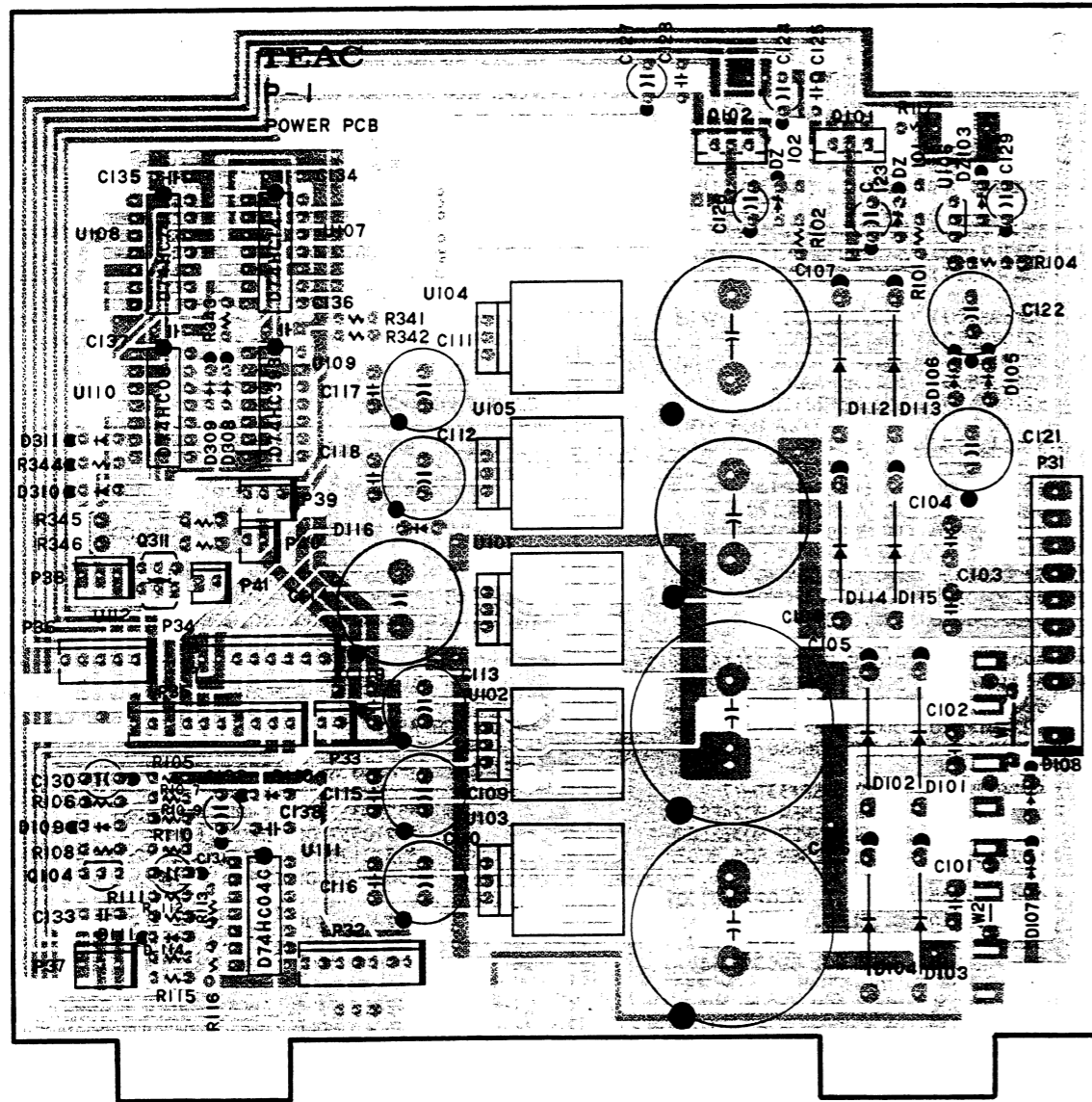
REF.NO.	PARTS NO.	DESCRIPTION	REMARKS
4- 1	5801483300	SPINDLE SUPPORT	
4- 2	*5801483100	MOTOR HOUSING	
4- 3	*5801494100	COIL SUPPORT ASSY	
4- 4	*5801096900	RUBBER SHEET	
4- 5	*5801483400	ROTOR STOPPER	
4- 6	*5801361100	ROTOR MAGNET ASSY	
4- 7	*5801057300	ROTOR YOKE	
4- 8	*5801483900	TURN TABLE PLATE	
4- 9	*5801483602	TURN TABLE ASSY	
4-10	*5801057000	CLAMPER YOKE	
4-11	*5801493500	MAGNET,FB3BDH32X18X4.5M	
4-12	*5801096300	PRESSURE SPRING(C)	
4-13	5801483200	CENTER CAP	
4-14	5801056900	CENTER RING	
4-15	*5801057200	MAGNET HOLDER	
4-16	5347009800	PICK UP ASY,KSS-151A S RP	
4-17	*5801058900	SHAFT GUIDE	
4-18	*5801059100	SHAFT HOLDER(R)	
4-19	*5801078300	COIL(S)	
4-20	*5801059400	YOKE(C)	
4-21	*5801097400	YOKE(B) ASSY	
4-22	*5801059200	YOKE(A)	
4-23	*5801059000	SHAFT HOLDER(F)	
4-24	*5801059600	YOKE HOLDER	
4-25	*5801078200	COIL(D)	
4-26	*5200297200	P.OUT PCB ASSY	
4-27	*5801164800	LOCK ARM BRACKET	
4-28	*5801164901	PU LOCK ARM	
4-30	*5801165700	CLAMPER	
4-31	5801096200	SPRING(G),CLAMPER	
4-32	5801167800	GUIDE RING	
4-33	*5801201600	CLAMPER BASE	
4-34	5370009200	MOTOR,DC RF-500TB	
4-35	*5200249500	C.MOTOR PCB ASSY	
4-36	*5801170200	PULLEY,MOTOR	
4-37	*5801201700	SHAFT(A)	
4-38	*5801164700	SHUTTER	
4-39	*5800669800	WORM ASSY	
4-40	5800979500	LOADING BELT	
4-41	5301754000	LEAF SW.,LSC-1220-1AU	
4-42	*5801202700	CYLINDER CAM	
4-43	*5801201500	LIFT ARM	
4-44	*5801201800	SHAFT(B)	
4-45	*5801201100	HOLDER	
4-46	5800846500	BUSH,RUBBER	
4-47	*5801086601	FLOATING, SPRING(A)	
4-48	*5801086701	FLOATING, SPRING(B)	
4-49	*5800846700	SPRING SUPPORT	
4-50	*5801307501	MECHA. BASE ASSY	
4-51	*5200244120	MAIN PCB ASSY	
4-52	*5801170100	CLAMPER GUIDE	
4-53	*5801176300	PU STOPPER(R)	
4-54	*5801176400	PU STOPPER(F)	

REF.NO.	PARTS NO.	DESCRIPTION	REMARKS
4-61	5780023006	SCREW,M3X6 BIND NI BL	
4-62	5780023008	SCREW,M3X8 BIND NI BL	
4-63	5780022006	SCREW,M2X6 BIND NI BL	
4-64	5785342200	WASHER,POLY. 2.6X5X0.25T	
4-65	5780212004	SCREW,M2X4 FLAT NI	
4-66	5785314000	WASHER,POLY. 4X6.5X0.5T	
4-67	5786001500	E RING,E1.5 (JIS)	
4-68	5786002000	E RING,E2 (JIS)	
4-69	5780023004	SCREW,M3X4 BIND	
4-70	5780213004	SCREW,M3X4 FLAT NI	
4-71	5780002004	SCREW,M2X4 BIND	
7-72	5785024700	WASHER,PLAIN 4X12XIT	
4-73	5785302400	WASHER,POLY. 2.1X5X0.25T	
4-74	5780002603	SCREW,M2.6X3 BIND	
4-75	5786003000	E RING,E3 (JIS)	
4-76	5783011704	SCREW,M1.7X4 BIND	

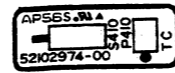
INCLUDED ACCESORIES

REF.NO.	PARTS NO.	DESCRIPTION	REMARKS
	*5700133900	OWNER'S MANUAL [J]	
	*5700134000	OWNER'S MANUAL [US,C,GE]	
	*5700134100	OWNER'S MANUAL [E]	
	△ 5350014800	AC CORD [J]	
	△ 5350014900	AC CORD [US,C,GE]	
	△ 5350015000	AC CORD [E]	
	*5801292100	LOCK PLATE [ALL EXCEPT J]	
	*5801484500	LOCK PLATE [J]	
	5744076300	REMOTE CON. UNIT,RC-356 [ALL EXCEPT E]	
	5744076310	REMOTE CON. UNIT,RC-357 [E]	
	5347006900	BATTERY [J]	
	5347007000	BATTERY [ALL EXCEPT J]	
	5744077800	PIN CORD,D102MK2/0.8	

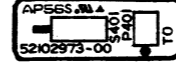
POWER PCB ASSY



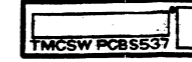
TC SW PCB ASSY



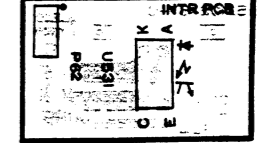
TO SW PCB ASSY



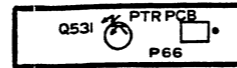
TMC SW PCB ASSY



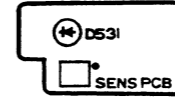
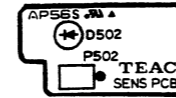
INTR PCB ASSY



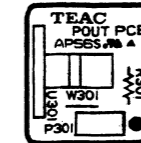
PTR PCB ASSY



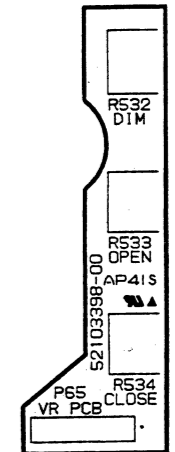
SENS PCB ASSY



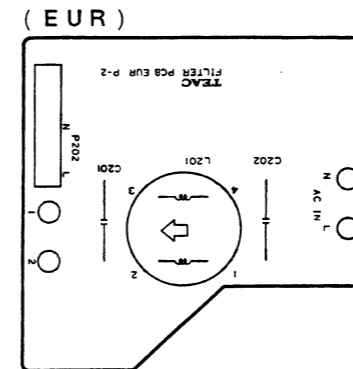
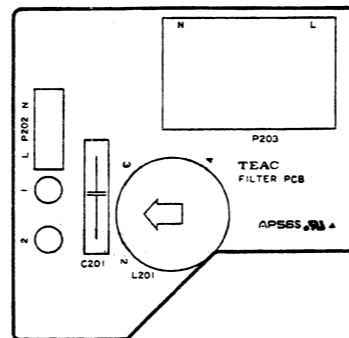
POUT PCB ASSY



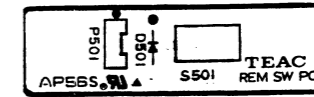
VR PCB ASSY



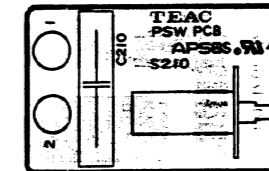
FILTER PCB ASSY



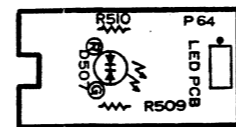
REM SW PCB ASSY



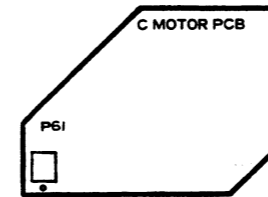
PSW PCB ASSY



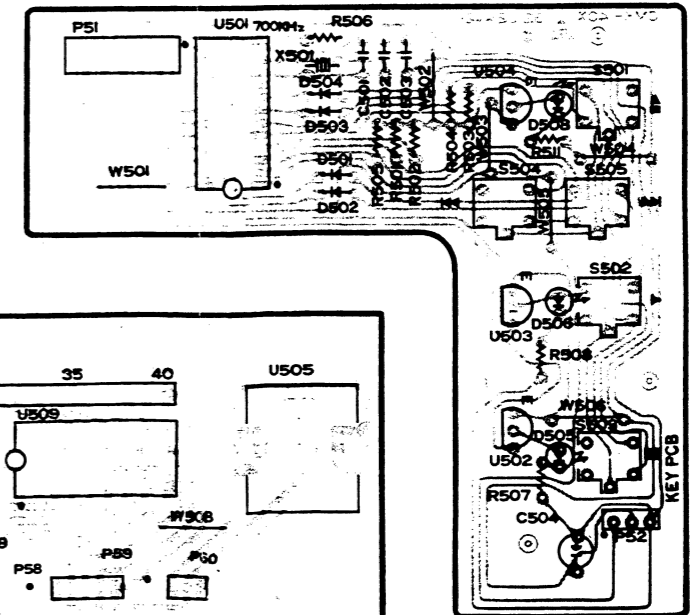
LED PCB ASSY



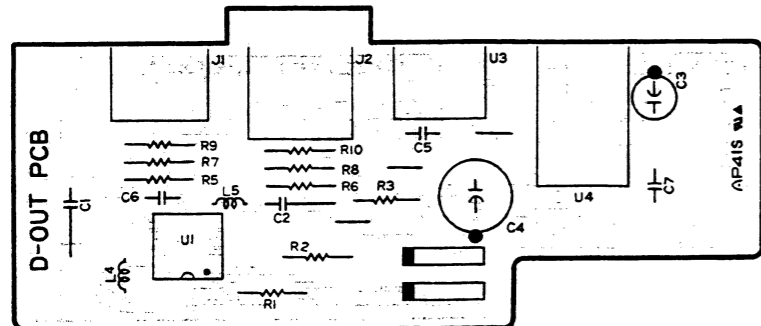
C MOTOR PCB ASSY



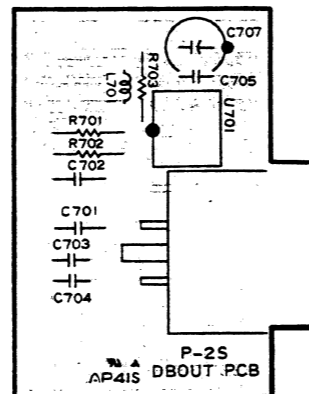
KEY PCB ASSY



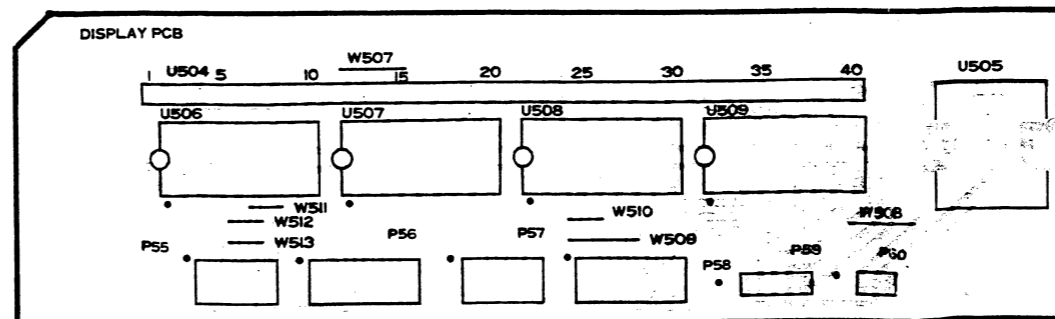
DOUT PCB ASSY



DB OUT PCB ASSY



DISPLAY PCB ASSY



MAIN PCB ASSY

REF.NO.	PARTS NO.	DESCRIPTION
	*5200244120	MAIN PCB ASSY
	*5210296801	MAIN PCB
	*5347023400	SHIELD SHEET (CU) E
U201	5220818301	IC.,UPD75P108CW-083 KEY
U202-203	5220062800	IC.,MSL9512RS
U204	5220099900	IC.,LH5116-10
U301,303	5220431200	IC.,M5238L
U302	5220440600	IC.,NJM4565L
U304	5220040900	IC.,UPD74HCU04C
U305	5220068200	IC.,HD74HC86P
U306	5220045300	IC.,UPD74HC238C
U307	5220055500	IC.,BU4053B
U308	5220411500	IC.,BA6109
U401	5220433700	IC.,CXA1081M
U402	5220433801	IC.,CXA1082BQ
U403	5220062300	IC.,CXD1125Q
U404	5220099900	IC.,LH5116-10
U405	5220440600	IC.,NJM4565L
U406	5220040900	IC.,UPD74HCU04C
U407	5220067600	IC.,HD74HC74P
U409-410	5220440600	IC.,NJM4565L
U411	5220818202	IC.,UPD75P108CW-104
U412-413	5220069300	IC.,HD74HC125P
U414	5220441700	IC.,TA7272P
Q201	5230018920	TR.,2SA1115F
Q202,302	5230780920	TR.,2SC2603F
Q203,301	5232259220	TR.,UN4111
Q305	5231756200	TR.,2SD882Q/P
Q306	5230508900	TR.,2SB772P
Q307-308	5232259220	TR.,UN4111
Q309	5232257820	TR.,UN4211
Q401	5230509100	TR.,2SB562C
Q402-403	5232257820	TR.,UN4211
Q406	5231762900	TR.,2SD774
Q409	5230510000	TR.,2SB734
Q412-413	5231756200	TR.,2SD882Q/P
Q414-415	5230508900	TR.,2SB772P
DZ201	5224583221	DIODE,ZENER RD3.3ESB2
DZ301	5224585321	DIODE,ZENER RD5.6ESB2
D301-305	5224015020	DIODE,ISS133T-77
D308-309	5224015020	DIODE,ISS133T-77
D402-403	5224015020	DIODE,ISS133T-77
X201	5347012000	OSC.,CERAMIC CST4.19MHZ
X401	5347010900	OSC.,CRYSTAL 16.9344MHZ
X402	5347012000	OSC.,CERAMIC CST4.19MHZ
R327	△ 5241270510	R.,INCOMB. 1W 1 OHM
C466	5267206700	C.,TRIMMER 20PF ECR-JA020E11
F1-2	5292809700	FILTER,LOW PASS BL-30
L401	5286033520	CHOKO COIL, 4.7UH(LAP2T)
V401	5280241200	R.,TRIMMER 22KB METAL H.
V402,406	5280241000	R.,TRIMMER 4.7KB METAL H.
V403	5280240800	R.,TRIMMER 1KB METAL H.
V404-405	5280236200	R.,TRIMMER 22KB METAL V.

MAIN PCB ASSY

REF.NO.	PARTS NO.	DESCRIPTION
TP1	5336128900	PLUG,CON. 8263-0911 WHT
TP2	5336128200	PLUG,CON. 8263-0211 WHT
P01	5336313000	SOCKET,CON. 5597-20APB
P03	5336127000	PLUG,CON. 8263-1012 WHT
P04	5336135400	PLUG,CON. 8263-0412 RED
P05	5336135200	PLUG,CON. 8263-0212 RED
P08	5336126400	PLUG,CON. 8263-0412 WHT
P09	5336145400	PLUG,CON. 8263-0412 YEL
P10	5336135300	PLUG,CON. 8263-0312 RED
P11	5336145300	PLUG,CON. 8263-0312 YEL
P12	5336137400	PLUG,CON. 8263-0412 BLK
P14	5336137300	PLUG,CON. 8263-0312 BLK
P15	5336126300	PLUG,CON. 8263-0312 WHT
P16-17	5336295800	SOCKET,CON. 00-8370-081
P18-19	5336295500	SOCKET,CON. 00-8370-051
P20	5336296100	SOCKET,CON. 00-8370-111
P24	5336128800	PLUG,CON. 8263-0811 WHT
P25	5336138000	PLUG,CON. 8263-1012 BLK
P27	5336128300	PLUG,CON. 8263-0311 WHT

FILTER PCB ASSY

REF.NO.	PARTS NO.	DESCRIPTION
	*5200297000	FILTER PCB ASSY [ALL EXCEPT E]
	*5200297010	FILTER PCB ASSY [E]
	*5210297000	FILTER PCB [ALL EXCEPT E]
	*5210325400	FILTER PCB [E]
L201	△ 5292806300	NOISE FILTER,FK0816MH3
C201	△ 5267704000	S.KILLER,0.0047UF/250V [ALL EXCEPT E]
	△ 5267704100	S.KILLER,0.0047UF/250V [E]
P202	5327007200	TERMINAL,2P [ALL EXCEPT E]
	5327007300	TERMINAL,3P [E]
P203	△ 5332019600	AC SOCKET,3P [ALL EXCEPT E]

PSW PCB ASSY

REF.NO.	PARTS NO.	DESCRIPTION
	*5200297600	PSW PCB ASSY [ALL EXCEPT E]
	*5200297610	PSW PCB ASSY [E]
	*5210297600	PSW PCB
C210	△ 5267704000	S.KILLER 0.0047UF/250V [ALL EXCEPT E]
	△ 5267704100	S.KILLER 0.0047UF/250V [E]
S210	△ 5300046200	PUSH SW.,1-1 SDDLDI

POWER PCB ASSY

REF.NO.	PARTS NO.	DESCRIPTION
	*5200244040	POWER PCB ASSY [J]
	*5200244050	POWER PCB ASSY [US,C]
	*5200244060	POWER PCB ASSY [GE]
	*5200244070	POWER PCB ASSY [E]
	*5210244001	POWER PCB
	5332015800	FUSE HOLDER [ALL EXCEPT GE]
	△ 13291818	FUSE,3.15A/125V(SB3.15) [J]
	△ 5307037700	FUSE,3A/250V TIME-L [US,C]
	△ 5142191000	FUSE,3.15A/250V TIME-L [E]
	*5730028600	HEAT SINK IC1625ST
	*5347023000	SHIELD SHEET A (CU)
	*5347023100	SHIELD SHEET B (CU)
Q101-102	△ 5145087000	TR.,2SD313E
Q104,311	△ 5230780920	TR.,2SC2603F
U101-102	△ 5220434400	IC.,M5F7805L
U103	△ 5220435300	IC.,M5F7905L
U104	△ 5220434800	IC.,M5F7812L
U105	△ 5220435700	IC.,M5F7912L
U106	5232255520	TR.,DTC143ES
U107	5220041700	IC.,UPD74HC14C
U108	5220042500	IC.,UPD74HC74C
U109	5220047600	IC.,UPD74HC393C
U110	5220041400	IC.,UPD74H08C
U111	5220040900	IC.,UPD74HCU04C
U112	5232256020	TR.,DTC114YS
D101-104	△ 5224018120	DIODE,FE1D-G23(TA)
D105-106	△ 5224016420	DIODE,S5688G
D107-111	5224015020	DIODE,ISS133T-77
D112-115	△ 5224018120	DIODE,FE1D-G23(TA)
D116-117	△ 5224016420	DIODE,S5688G
D308-311	5224015020	DIODE,ISS133T-77
DZ101	5224591421	DIODE,ZENER RD24ESB2
DZ102	5224592921	DIODE,ZENER RD33ESB2
DZ103	5224586121	DIODE,ZENER RD6.8ESB2
C101-104	△ 5263291420	C.,POLY. 0.022UF/100V
C105-106	△ 5262013810	C.,ELEC. 3300UF/35V
C107-108	△ 5260287800	C.,ELEC. 4700UF/25V
C114	△ 5260428510	C.,ELEC. 6800UF/16V
P31	5336172900	PLUG,CON. 5275-09A
P32	5336137700	PLUG,CON. 8263-0712 (BLK)
P33	5336135200	PLUG,CON. 8263-0212 (RED)
P34	5336126800	PLUG,CON. 8263-0812 (WHT)
P35	5336138000	PLUG,CON. 8263-1012 (BLK)
P36	5336126500	PLUG,CON. 8263-0512 (WHT)
P37	5336145300	PLUG,CON. 8263-0312 (YEL)
P38	5336137300	PLUG,CON. 8263-0312 (BLK)
P39	5336126300	PLUG,CON. 8263-0312 (WHT)
P40	5336126200	PLUG,CON. 8263-0212 (WHT)
P41	5336145200	PLUG,CON. 8263-0212 (YEL)

KEY PCB ASSY

REF.NO.	PARTS NO.	DESCRIPTION
	*5200244210	KEY PCB ASSY
	*5210244200	KEY PCB
	*5801295600	SPACER LS-15
D502-504	5224015020	DIODE,ISS133T-77
D505,508	5225020400	LED,SLH38 DC3F
D506	5225020600	LED,SLH38 (GRN)
P51	5336299100	SOCKET,CON. 00-8370-117
P52	5336128300	PLUG,CON. 3P WHT 238
S501-503	5302107100	TACT SWITCH,SKHHPJ
S504-505	5302106700	TACT SWITCH,B3F-1150
U501	5220812900	IC.,UPD7566CS-085
U502-504	5232259220	TR.,UN4111 DIGITAL
X501	5347006500	OSC,CERAMIC

DB OUT PCB ASSY

REF.NO.	PARTS NO.	DESCRIPTION
	*5200339000	DB OUT PCB ASSY
	*5210339000	DB OUT PCB
	*5334072800	PLUG,CANNON CONNECTOR
L701	5286018200	CHOKO COIL, 4.7UH
L702-703	5286017820	CHOKO COIL, 2.2UH
U701	5220082800	IC.,SN75158N

D-OUT PCB ASSY

REF.NO.	PARTS NO.	DESCRIPTION
	*5200337700	D-OUT PCB ASSY
	*5210337700	D-OUT PCB
	*5336128400	PLUG,CON. 8263-0411 (WHT)
	*5801493800	EARTH PLATE
U1	5220091900	IC.,TC74HC04AF
U3	5292210100	OPTICAL MODULE,GP1F32T
U4	5292210500	OPTICAL TRANS.,ODL50 1252P
L4-5	5286017420	CHOKO COIL, 1.00UH
J1	5334078000	BNC CONNECTOR,BCJ-FPLH
J2	5330512700	JACK,PIN 1P YKB11-0400

C.MOTOR PCB ASSY

REF.NO.	PARTS NO.	DESCRIPTION
	*5200249500	C.MOTOR PCB ASSY
	*5210249500	C.MOTOR PCB

DISPLAY PCB ASSY

REF.NO.	PARTS NO.	DESCRIPTION
	*5200241001	DISPLAY PCB ASSY
	*5210241001	DISPLAY PCB
	*5801071100	FL CUSHION
U504	5347009100	FL UNIT,FIPI0YMB
U505	5292209500	REMO-CON MODULE,SBX1483-52
U506-509	5220062600	IC.,M54564P
P55,57	5340006500	WIRE HOLDER,5P 5062
P56,58	5340006800	WIRE HOLDER,8P 5062

REM SW PCB ASSY

REF.NO.	PARTS NO.	DESCRIPTION
	*5200302900	REM SW PCB ASSY
	*5210302900	REM SW PCB
	5224015020	DIODE,1SS133T-77
P501	5336249300	PLUG,CON. B03B-PH-K-S (WHT)
S501	5300913900	SLIDE SW,1-2 N SSSS2

VR PCB ASSY

REF.NO.	PARTS NO.	DESCRIPTION
	*5200339800	VR PCB ASSY
	*5210339800	VR PCB
P0	5336287700	PLUG,CON. S7B-PH-K-S (WHT)
R532-534	5282018700	VR.,10KB ISIUVR 9

LED PCB ASSY

REF.NO.	PARTS NO.	DESCRIPTION
	*5200244300	LED PCB ASSY
	*5210244300	LED PCB
D507	5730037300	LED,SPACER,LH-5
	5225020700	LED,SPR54 MVW3F (GRN/RED)

PTR PCB ASSY

REF.NO.	PARTS NO.	DESCRIPTION
	*5200245600	PTR PCB ASSY
	*5210245600	PTR PCB
Q531	*5801103500	LED SPACER(C)
	5228013800	PHOTO TR.,SPS-135C

TC SW PCB ASSY

REF.NO.	PARTS NO.	DESCRIPTION
	*5200297400	TC SW PCB ASSY
	*5210297400	TC SW PCB
S410	5300912500	SLIDE SW.,1-2 SCL101S

TMC SW PCB ASSY

REF.NO.	PARTS NO.	DESCRIPTION
	*5200245400	TMC SW PCB ASSY
	*5210245400	TMC SW PCB
S537	5301456800	MICRO SW.,SS-5GL13-FD

INTR PCB ASSY

REF.NO.	PARTS NO.	DESCRIPTION
	*5200245700	INTR PCB ASSY
	*5210245700	INTR PCB
U531	5228008200	PHOTO INTERRUPTER,EE-SJBB

SENS PCB ASSY

REF.NO.	PARTS NO.	DESCRIPTION
	*5200303000	SENS PCB ASSY
	*5210303000	SENS PCB
D502	5225020100	LED,SE303A

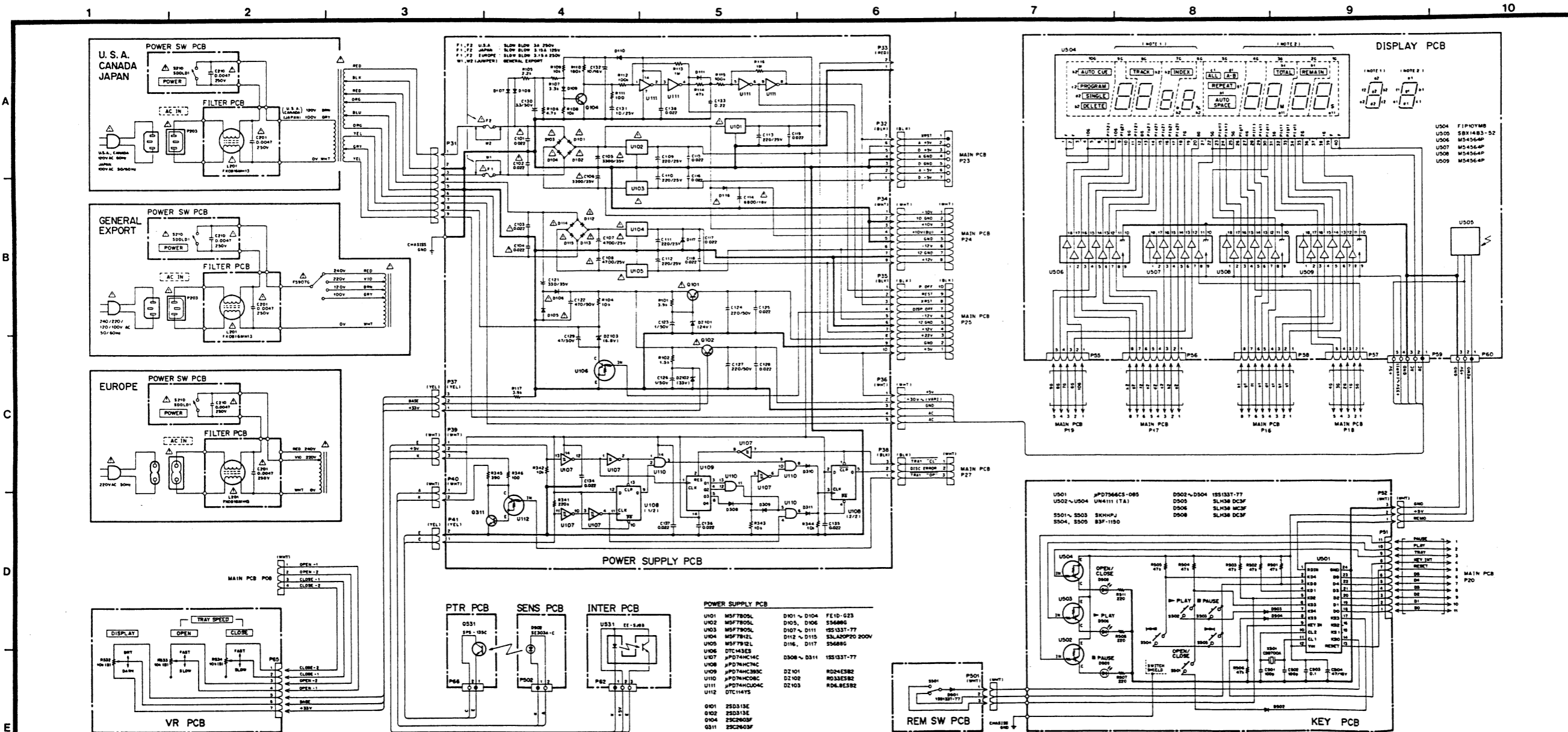
TO SW PCB ASSY

REF.NO.	PARTS NO.	DESCRIPTION
	*5200297300	TO SW PCB ASSY
	*5210297300	TO SW PCB
S401	5300912500	SLIDE SW.,1-2 SCL101S

P.OUT PCB ASSY

REF.NO.	PARTS NO.	DESCRIPTION
	*5200297200	P.OUT PCB ASSY
	*5210297200	P.OUT PCB
U301	5228014100	PHOTO INTERRUPT.,GPIA51HR

SCHEMATIC DIAGRAM P-2S POWER SUPPLY, DISPLAY AND KEY PCB



NOTES

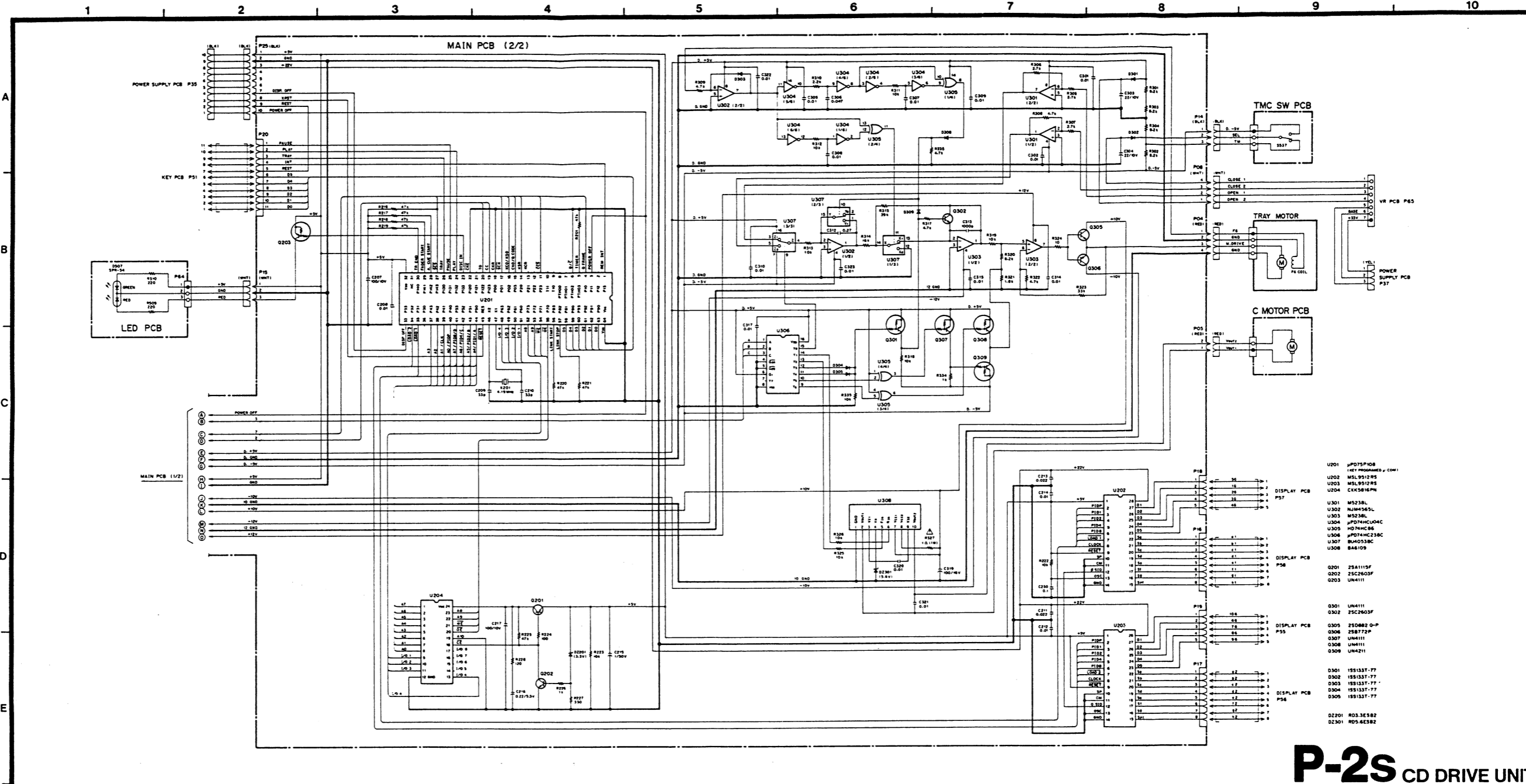
1. Resistor values are in ohms (k=kilo-ohms, M=megohms).
2. Capacitor values are in microfarads (μ =picofarads).
3. Parts marked with Δ this sign are safety critical components. They must always be replaced with identical components-refer to the appropriate parts list and ensure exact replacement.

注意

1. 抵抗の単位は Ω (k=k Ω , M=M Ω)です。
2. コンデンサの単位は μ F(μ =pF)です。
3. Δ マークのある部品は安全重要部品です。交換するときは必ずテック指定の部品を使用してください。

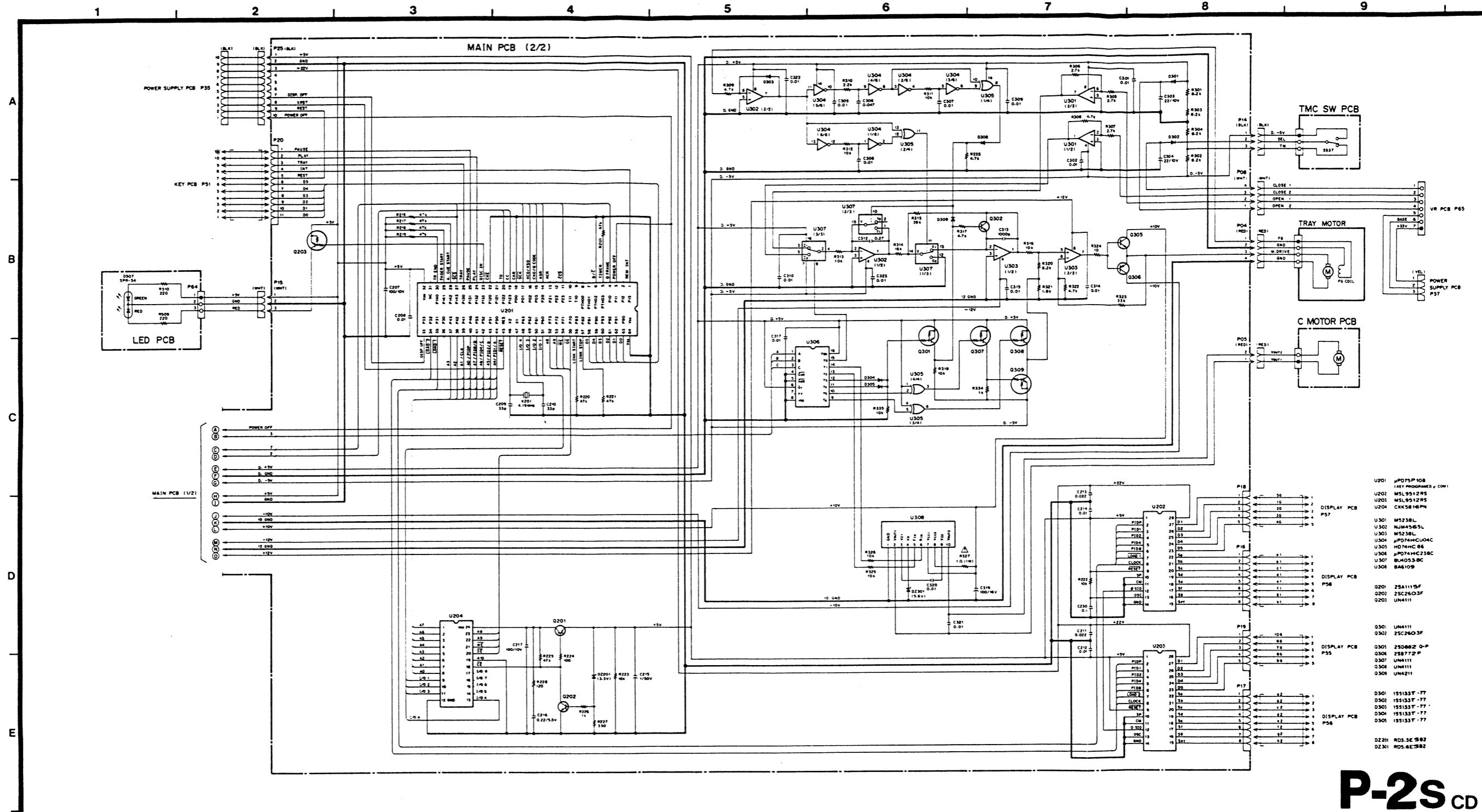
INSTRUCTIONS FOR SERVICE PERSONNEL
 BEFORE RETURNING APPLIANCE TO THE CUSTOMER, MAKE LEAKAGE CURRENT OR RESISTANCE MEASUREMENTS TO DETERMINE THAT EXPOSED PARTS ARE ACCEPTABLY INSULATED FROM THE SUPPLY CIRCUIT.

P-2S CD DRIVE UNIT



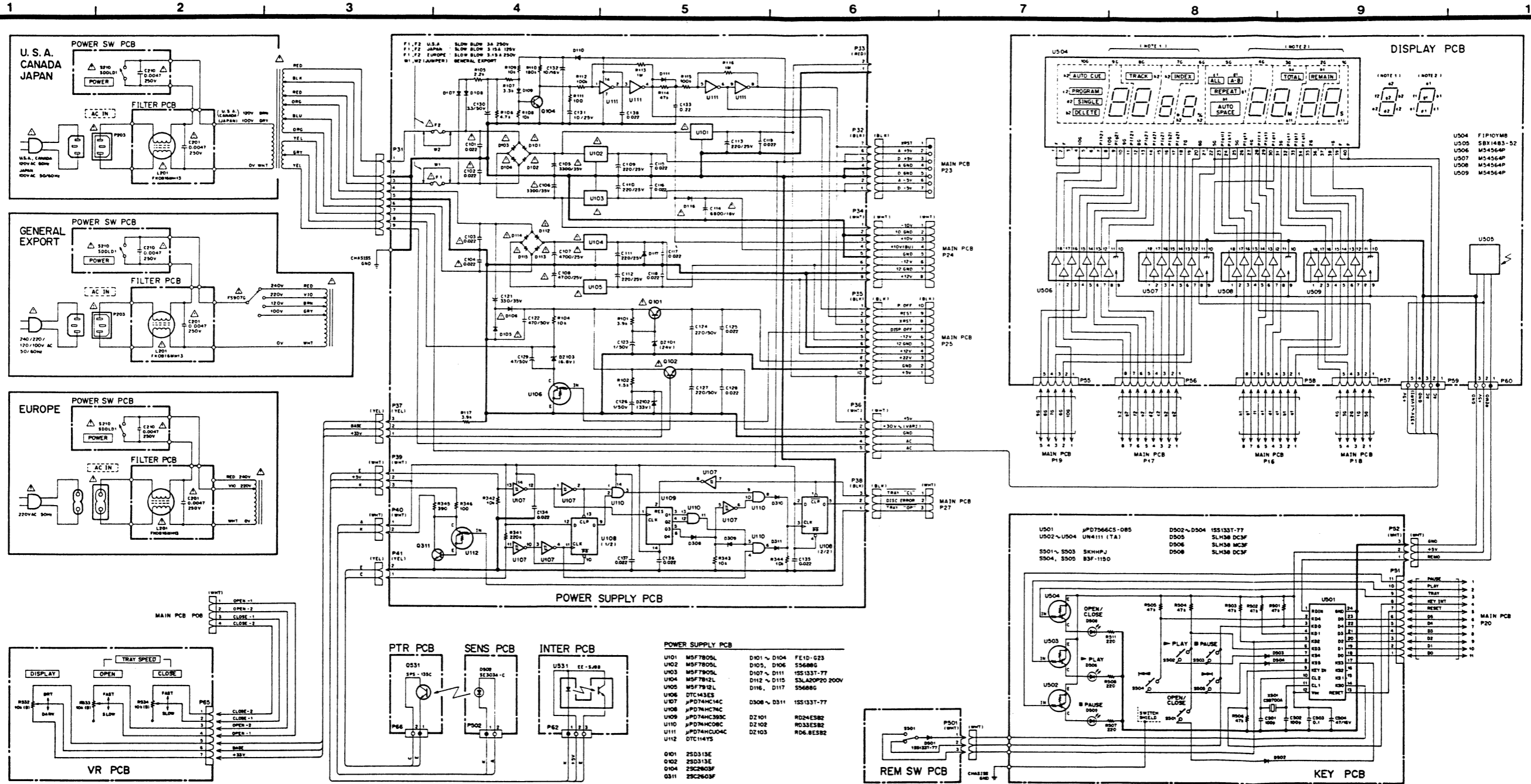
P-2S CD DRIVE UNIT

SCHEMATIC DIAGRAM P-2S MAIN(2/2) PCB



- U201 µPD73P108
- U202 MS19512RS
- U203 MS19512RS
- U204 CSX5816PM
- U301 M5238L
- U302 NJM4558L
- U303 M5238L
- U304 µPD74HC04C
- U305 HD74HC06
- U306 µPD74HC238C
- U307 BA4053BC
- U308 BA6109
- Q201 2SA1115F
- Q202 2SC2603F
- Q203 UN4111
- Q301 UN4111
- Q302 2SC2603F
- Q303 2SD682Z Q-P
- Q304 2SB772P
- Q305 UN4111
- Q306 UN4111
- Q307 UN4211
- Q308 UN4211
- Q309 15S133T-77
- Q310 15S133T-77
- Q311 15S133T-77
- Q312 15S133T-77
- Q313 15S133T-77
- Q314 15S133T-77
- Q315 15S133T-77
- Q316 15S133T-77
- Q317 15S133T-77
- Q318 15S133T-77
- Q319 15S133T-77
- Q320 15S133T-77
- D220 R03.3K-582
- D230 R05.4K-582

SCHEMATIC DIAGRAM P-2S POWER SUPPLY, DISPLAY AND KEY PCB



NOTES

- Resistor values are in ohms (k=kilo-ohms, M=megohms).
- Capacitor values are in microfarads (μF) or picofarads (pF).
- Parts marked with Δ this sign are safety critical components. They must always be replaced with identical components-refer to the appropriate parts list and ensure exact replacement.

注意

- 抵抗の単位はΩ (k=k.0, M=M.0)です。
- コンデンサの単位はμF (p=pF)です。
- Δマークのある部品は安全重要部品です。交換するときは必ずテック指定の部品を使用してください。

INSTRUCTIONS FOR SERVICE PERSONNEL
 BEFORE RETURNING APPLIANCE TO THE CUSTOMER, MAKE LEAKAGE CURRENT OR RESISTANCE MEASUREMENTS TO DETERMINE THAT EXPOSED PARTS ARE ACCEPTABLY INSULATED FROM THE SUPPLY CIRCUIT.

P-2S CD DRIVE UNIT